

Product datasheet for **AP23641PU-N**

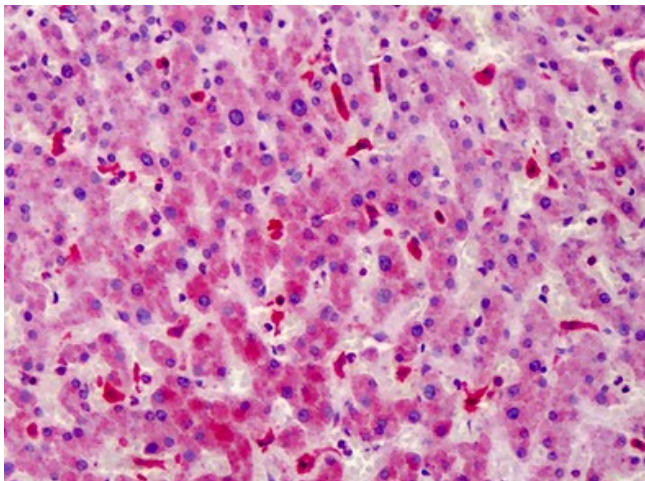
STEAP4 Rabbit Polyclonal Antibody

Product data:

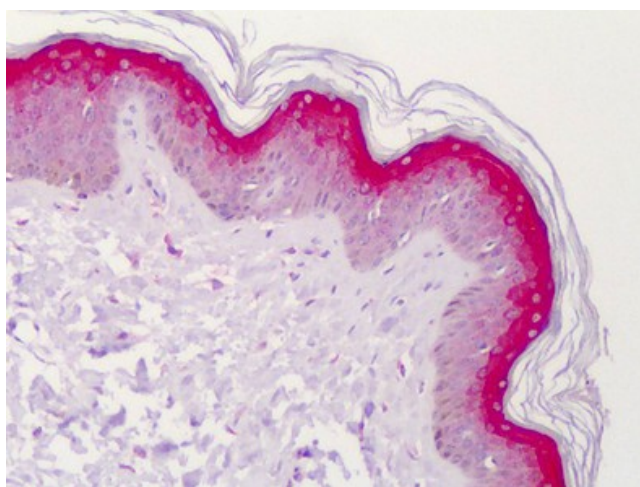
Product Type:	Primary Antibodies
Applications:	ELISA, IF, IHC
Recommended Dilution:	ELISA: 1/20000. Immunofluorescence: 1/100 - 1/500. Immunohistochemistry on Paraffin Sections: 1/100.
Reactivity:	Human
Host:	Rabbit
Isotype:	IgG
Clonality:	Polyclonal
Immunogen:	STEAP4 antibody was raised against synthetic peptide - KLH conjugated
Specificity:	STEAP4 Antibody detects endogenous levels of total STEAP4 protein.
Formulation:	PBS (without Mg ²⁺ , Ca ²⁺), pH 7.4 containing 150 mM sodium chloride, 0.02% sodium azide as preservative and 50% glycerol as stabilizer State: Liquid purified Ig fraction
Concentration:	lot specific
Purification:	Immunoaffinity Chromatography
Conjugation:	Unconjugated
Storage:	Store the antibody at -20°C. Avoid repeated freezing and thawing.
Stability:	Shelf life: one year from despatch.
Gene Name:	STEAP4 metalloredutase
Database Link:	Entrez Gene 79689 Human Q687X5
Synonyms:	STEAP-4, STAMP2, TNFAIP9, Metalloredutase STEAP4
Protein Families:	Druggable Genome, Transmembrane



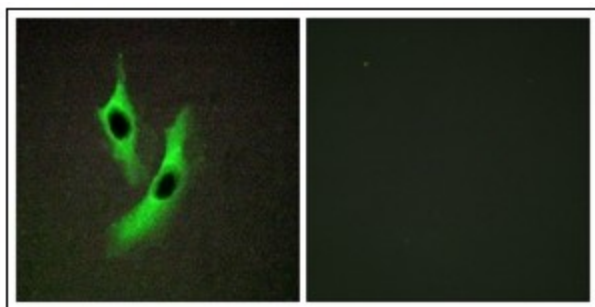
[View online »](#)

Product images:

Human Liver: Formalin-Fixed, Paraffin-Embedded (FFPE)



Human Skin: Formalin-Fixed, Paraffin-Embedded (FFPE)



Immunofluorescence analysis of HeLa cells, using STEAP4 Antibody. The picture on the right is treated with the synthesized peptide.