

## Product datasheet for **AP23639PU-N**

### ACTG2 (N-term) Rabbit Polyclonal Antibody

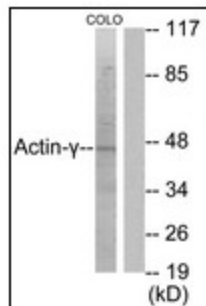
#### Product data:

Product Type:	Primary Antibodies
Applications:	ELISA, IHC, WB
Recommended Dilution:	<b>ELISA:</b> 1/20000. <b>Immunohistochemistry on Paraffin Sections:</b> 1/200. <b>Western Blot:</b> 1/500 - 1/1000.
Reactivity:	Human, Mouse, Rat
Host:	Rabbit
Isotype:	IgG
Clonality:	Polyclonal
Immunogen:	Synthetic N-Terminal Actin-gamma2 peptide - KLH conjugated
Specificity:	Actin-gamma2 Antibody detects endogenous levels of total Actin-gamma2 protein.
Formulation:	PBS (without Mg <sup>2+</sup> , Ca <sup>2+</sup> ), pH 7.4 containing 150 mM sodium chloride, 0.02% sodium azide as preservative and 50% glycerol as stabilizer State: Liquid purified Ig fraction
Concentration:	lot specific
Purification:	Immunoaffinity Chromatography
Conjugation:	Unconjugated
Storage:	Store the antibody at -20°C. Avoid repeated freezing and thawing.
Stability:	Shelf life: one year from despatch.
Gene Name:	actin, gamma 2, smooth muscle, enteric
Database Link:	<a href="#">Entrez Gene 11468 Mouse</a> <a href="#">Entrez Gene 25365 Rat</a> <a href="#">Entrez Gene 72 Human P63267</a>
Synonyms:	ACT; ACTA3; ACTE; ACTL3; ACTSG; Alpha-actin-3; Gamma-2-actin; OTTHUMP00000202509
Protein Pathways:	Vascular smooth muscle contraction

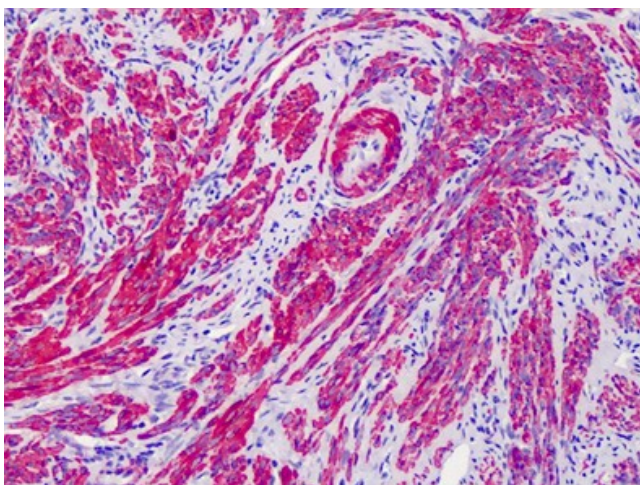


[View online »](#)

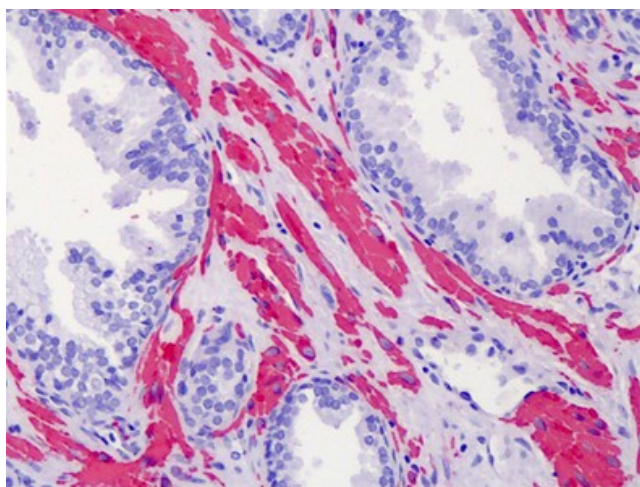
## Product images:



Western blot analysis of extracts from COLO205 cells, using Actin-gamma2 Antibody. The lane on the right is treated with the synthesized peptide.



Human Uterus: Formalin-Fixed, Paraffin-Embedded (FFPE)



Human Prostate: Formalin-Fixed, Paraffin-Embedded (FFPE)