

## Product datasheet for **AP23633PU-N**

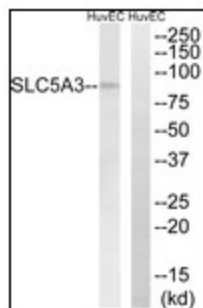
### SLC5A3 Rabbit Polyclonal Antibody

#### Product data:

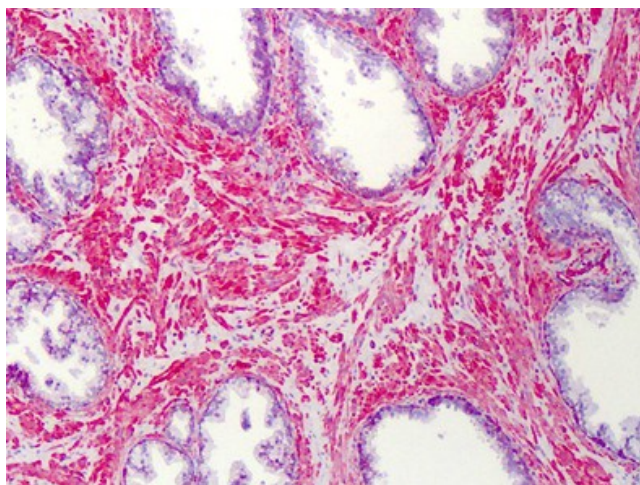
Product Type:	Primary Antibodies
Applications:	ELISA, IHC, WB
Recommended Dilution:	<b>ELISA:</b> 1/10000. <b>Immunohistochemistry on Paraffin Sections:</b> 1/200. <b>Western Blot:</b> 1/500 - 1/1000.
Reactivity:	Human, Mouse, Rat
Host:	Rabbit
Isotype:	IgG
Clonality:	Polyclonal
Immunogen:	Synthetic SLC5A3 peptide - KLH conjugated
Specificity:	SLC5A3 Antibody detects endogenous levels of total SLC5A3 protein.
Formulation:	PBS (without Mg <sup>2+</sup> , Ca <sup>2+</sup> ), pH 7.4 containing 150 mM sodium chloride, 0.02% sodium azide as preservative and 50% glycerol as stabilizer State: Liquid purified Ig fraction
Concentration:	lot specific
Purification:	Immunoaffinity Chromatography
Conjugation:	Unconjugated
Storage:	Store the antibody at -20°C. Avoid repeated freezing and thawing.
Stability:	Shelf life: one year from despatch.
Gene Name:	solute carrier family 5 member 3
Database Link:	<a href="#">Entrez Gene 53881 Mouse</a> <a href="#">Entrez Gene 114507 Rat</a> <a href="#">Entrez Gene 6526 Human P53794</a>
Synonyms:	SMIT; SMIT2
Protein Families:	Transmembrane



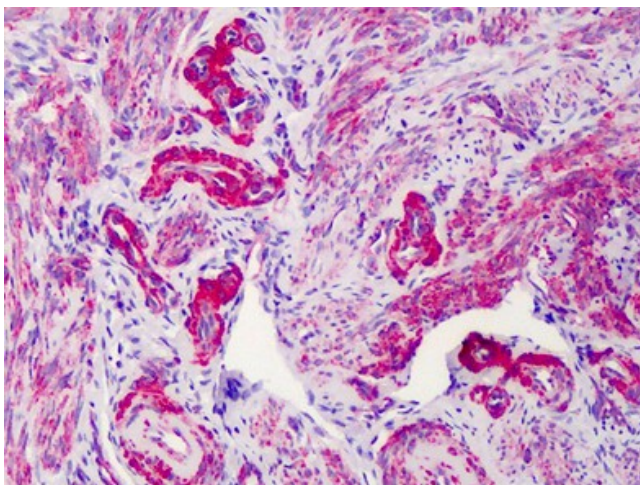
[View online »](#)

**Product images:**

Western blot analysis of extracts from HuvEc cells, using SLC5A3 Antibody. The lane on the right is treated with the synthesized peptide.



Human Prostate: Formalin-Fixed, Paraffin-Embedded (FFPE)



Human Uterus: Formalin-Fixed, Paraffin-Embedded (FFPE)