

Product datasheet for **AP23632PU-N**

XIAP (75-226) Rabbit Polyclonal Antibody

Product data:

Product Type:	Primary Antibodies
Applications:	IF, IHC, WB
Recommended Dilution:	Immunocytochemistry: 1/100 - 1/200. Immunofluorescence: 1/100 - 1/200. Immunohistochemistry on Paraffin Sections: 10 µg/ml. Western Blot: 1/500 - 1/3000.
Reactivity:	Human, Mouse, Porcine, Rabbit, Rat
Host:	Rabbit
Clonality:	Polyclonal
Immunogen:	Recombinant protein fragment containing a sequence corresponding to a region within amino acids 75 and 226 of BIRC4
Specificity:	This antibody reacts to X-linked Inhibitor Of Apoptosis Protein XIAP (XIAP/BIRC4) at aa 75-226.
Formulation:	0.1M Tris-Glycine, pH 7.0 containing 10% Glycerol and 0.01% Thimerosal State: Aff - Purified State: Liquid purified Ig fraction
Concentration:	lot specific
Purification:	Immunoaffinity Chromatography
Conjugation:	Unconjugated
Storage:	Store the antibody (in aliquots) at -20°C. Avoid repeated freezing and thawing.
Stability:	Shelf life: one year from despatch.
Gene Name:	X-linked inhibitor of apoptosis
Database Link:	<u>Entrez Gene 11798 Mouse</u> <u>Entrez Gene 63879 Rat</u> <u>Entrez Gene 331 Human P98170</u>



[View online »](#)

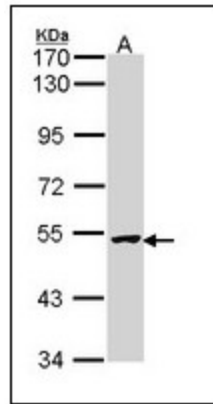
Background: Apoptosis inhibitor 3 (API3) is a member of a family of proteins which inhibit apoptosis through binding to tumor necrosis factor receptor-associated factors TRAF1 and TRAF2. Similar to API1, API3 inhibits apoptosis induced by menadione, a potent inducer of free radicals, and ICE. API3 also inhibits at least two members of the caspase family of cell-death proteases, caspase-3 and caspase-7.

Synonyms: HILP, API3, XIAP

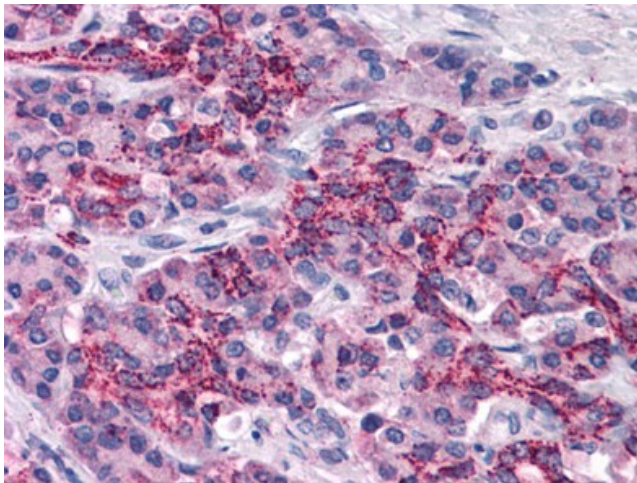
Protein Families: Druggable Genome

Protein Pathways: Apoptosis, Focal adhesion, NOD-like receptor signaling pathway, Pathways in cancer, Small cell lung cancer, Ubiquitin mediated proteolysis

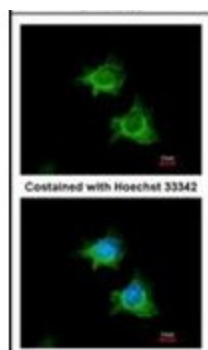
Product images:



Sample (30 ug of whole cell lysate). A: HeLa. 7.5% SDS PAGE. XIAP antibody diluted at 1/1000.



Human Pancreas: Formalin-Fixed, Paraffin-Embedded (FFPE)



Immunofluorescence analysis of methanol-fixed HeLa, using BIRC4 antibody at 1/100 dilution.