

Product datasheet for **AP23631PU-N**

clAP2 (BIRC3) (314-508) Rabbit Polyclonal Antibody

Product data:

Product Type:	Primary Antibodies
Applications:	IHC, WB
Recommended Dilution:	Immunohistochemistry on Paraffin Sections: 10 µg/ml. Western Blot: 1/500 - 1/3000.
Reactivity:	Bovine, Human
Host:	Rabbit
Clonality:	Polyclonal
Immunogen:	Recombinant protein fragment containing a sequence corresponding to a region within amino acids 314 and 508 of Human clAP2
Specificity:	This antibody reacts to Baculoviral IAP Repeat-containing 3 (BIRC3) at aa 314-508.
Formulation:	0.1M Tris-glycine, pH 7.0 containing 10% Glycerol and 0.01% Thimerosal State: Aff - Purified State: Liquid purified Ig fraction
Concentration:	lot specific
Purification:	Immunoaffinity Chromatography
Conjugation:	Unconjugated
Storage:	Store the antibody (in aliquots) at -20°C. Avoid repeated freezing and thawing.
Stability:	Shelf life: one year from despatch.
Gene Name:	baculoviral IAP repeat containing 3
Database Link:	Entrez Gene 330 Human Q13489



[View online »](#)

Background:

Apoptosis inhibitor 2 (API2) is a member of a family of proteins that inhibits apoptosis by binding to tumor necrosis factor receptor-associated factors TRAF1 and TRAF2, probably by interfering with activation of ICE-like proteases. API2 inhibits apoptosis induced by serum deprivation but does not affect apoptosis resulting from exposure to menadione, a potent inducer of free radicals. The amino acid sequence predicts three baculovirus IAP repeat domains and a ring finger domain. The names of API1 and API2 have been confusing. Suffice it to say that 'apoptosis inhibitor 2' is hiap-1 (inhibitor of apoptosis 1).

Synonyms:

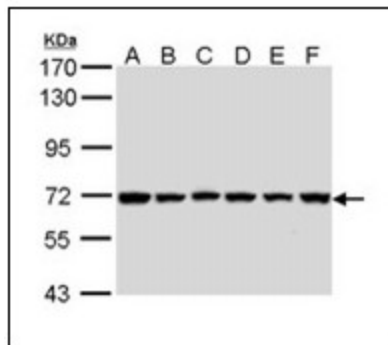
API2, MIHC, RNF49, C-IAP2, cIAP2, IAP homolog C, Apoptosis inhibitor 2, HIAP-1

Protein Families:

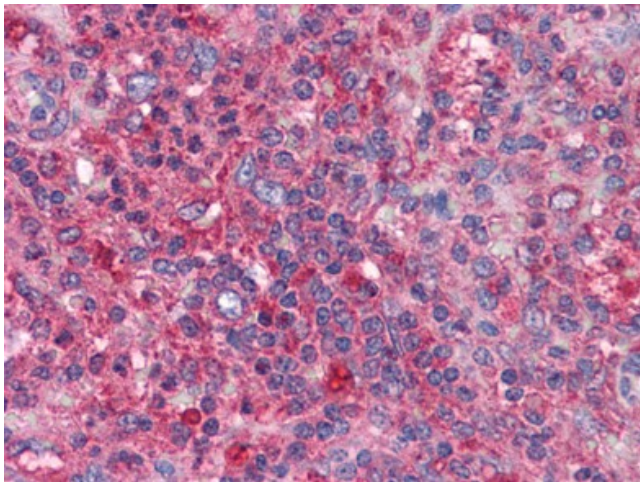
Druggable Genome

Protein Pathways:

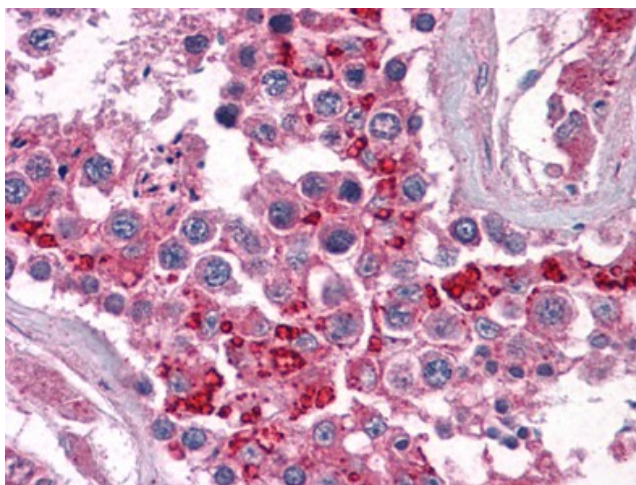
Apoptosis, Focal adhesion, NOD-like receptor signaling pathway, Pathways in cancer, Small cell lung cancer, Ubiquitin mediated proteolysis

Product images:


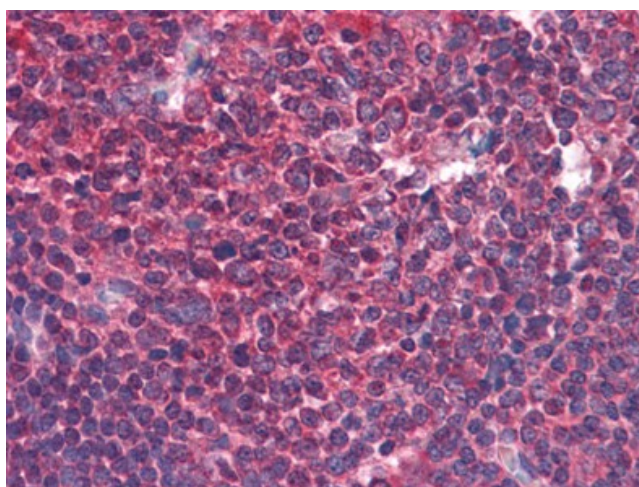
Sample (30 ug of whole cell lysate). A: 293T. B: A431. C: H1299. D: HeLa. E: Hep G2. F: Molt-4. 7.5% SDS PAGE. BIRC3 antibody diluted at 1/1000.



Human Spleen: Formalin-Fixed, Paraffin-Embedded (FFPE)



Human Testis: Formalin-Fixed, Paraffin-Embedded (FFPE)



Human Tonsil: Formalin-Fixed, Paraffin-Embedded (FFPE)