

## Product datasheet for **AP23628PU-N**

### TLR3 (514-657) Rabbit Polyclonal Antibody

#### Product data:

Product Type:	Primary Antibodies
Applications:	IF, IHC, WB
Recommended Dilution:	<b>Immunocytochemistry.</b> <b>Immunofluorescence:</b> 1/100 - 1/200. <b>Immunohistochemistry on Paraffin Sections:</b> 10 µg/ml. <b>Western Blot:</b> 1/1000 - 1/10000.
Reactivity:	Bovine, Feline, Guinea Pig, Human, Monkey, Mouse, Porcine, Rabbit, Rat
Host:	Rabbit
Clonality:	Polyclonal
Immunogen:	TLR3 antibody was raised against recombinant protein fragment containing a sequence corresponding to a region within amino acids 514 and 657 of TLR3.
Specificity:	This antibody reacts to Toll-like Receptor 3 (TLR3) at aa 514-657.
Formulation:	0.1 M Tris-glycine, pH 7.0 containing 10% Glycerol and 0.01% Thimerosal State: Aff - Purified State: Liquid purified Ig fraction
Concentration:	lot specific
Purification:	Immunoaffinity Chromatography
Conjugation:	Unconjugated
Storage:	Store the antibody (in aliquots) at -20°C. Avoid repeated freezing and thawing.
Stability:	Shelf life: one year from despatch.
Gene Name:	toll like receptor 3
Database Link:	<a href="#">Entrez Gene 142980 Mouse</a> <a href="#">Entrez Gene 364594 Rat</a> <a href="#">Entrez Gene 7098 Human</a> <a href="#">O15455</a>



[View online »](#)

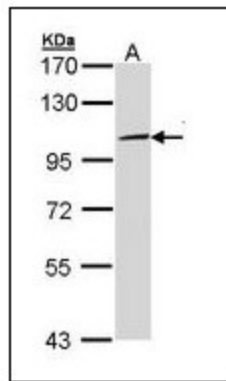
**Background:** TLR3 is a member of the Toll-like receptor (TLR) family which plays a fundamental role in pathogen recognition and activation of innate immunity. TLRs are highly conserved from *Drosophila* to humans and share structural and functional similarities. They recognize pathogen-associated molecular patterns (PAMPs) that are expressed on infectious agents, and mediate the production of cytokines necessary for the development of effective immunity.

**Synonyms:** Toll-like receptor 3

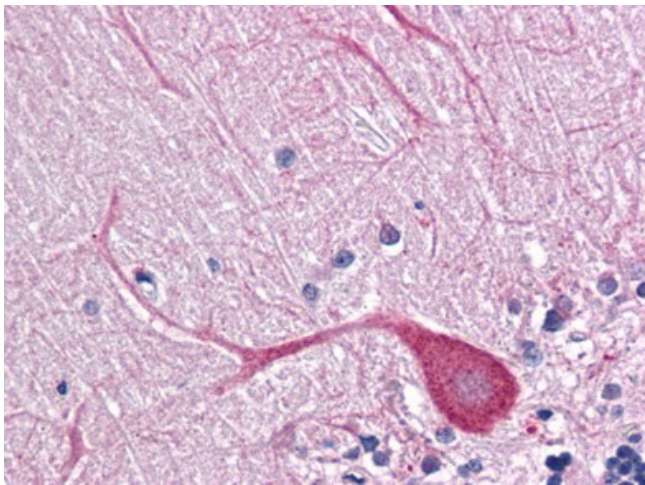
**Protein Families:** Druggable Genome, Transmembrane

**Protein Pathways:** Toll-like receptor signaling pathway

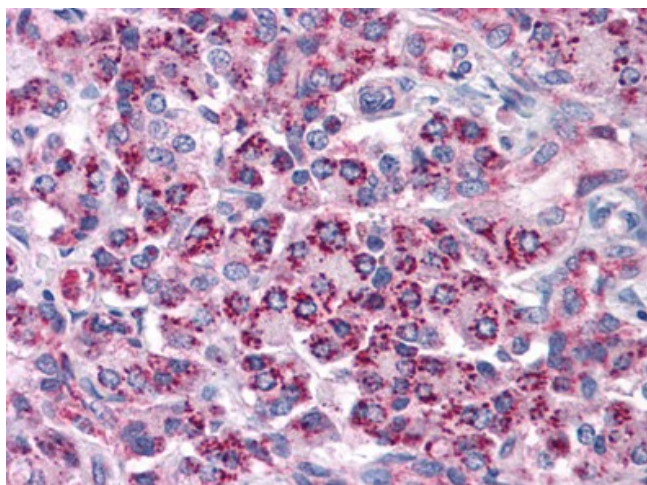
**Product images:**



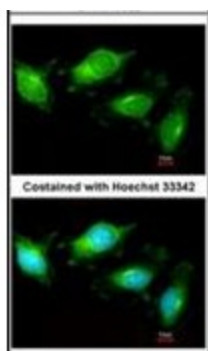
Sample (30 ug of whole cell lysate). A: Molt-4.  
7.5% SDS PAGE. TLR3 antibody diluted at 1/5000.



Human Brain, Cerebellum: Formalin-Fixed,  
Paraffin-Embedded (FFPE)



Human Pancreas: Formalin-Fixed, Paraffin-Embedded (FFPE)



Immunofluorescence analysis of methanol-fixed HeLa, using TLR3 antibody at 1/200 dilution.