

## Product datasheet for **AP23626PU-N**

### TCP1 beta (CCT2) (227-473) Rabbit Polyclonal Antibody

#### Product data:

Product Type:	Primary Antibodies
Applications:	IHC, WB
Recommended Dilution:	<b>Immunohistochemistry on Paraffin Sections:</b> 10 µg/ml. <b>Western Blot:</b> 1/500 - 1/3000.
Reactivity:	Bovine, Human, Mouse, Porcine, Rabbit, Rat, Zebrafish
Host:	Rabbit
Clonality:	Polyclonal
Immunogen:	Recombinant protein fragment containing a sequence corresponding to a region within amino acids 277 and 473 of Human TCP1 beta
Specificity:	This antibody reacts to T-complex Protein 1, Beta Subunit (CCT2) at aa 277-473.
Formulation:	0.1 M Tris-glycine, pH 7.0 containing 10% Glycerol and 0.01% Thimerosal State: Aff - Purified State: Liquid purified Ig fraction
Concentration:	lot specific
Purification:	Immunoaffinity Chromatography
Conjugation:	Unconjugated
Storage:	Store the antibody (in aliquots) at -20°C. Avoid repeated freezing and thawing.
Stability:	Shelf life: one year from despatch.
Gene Name:	chaperonin containing TCP1 subunit 2
Database Link:	<a href="#">Entrez Gene 12461 Mouse</a> <a href="#">Entrez Gene 299809 Rat</a> <a href="#">Entrez Gene 10576 Human P78371</a>



[View online »](#)

**Background:**

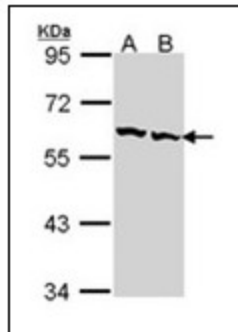
This gene encodes a molecular chaperone that is member of the chaperonin containing TCP1 complex (CCT), also known as the TCP1 ring complex (TRiC). This complex consists of two identical stacked rings, each containing eight different proteins. Unfolded polypeptides enter the central cavity of the complex and are folded in an ATP-dependent manner. The complex folds various proteins, including actin and tubulin. Alternate transcriptional splice variants of the gene described in this record have been observed but have not been thoroughly characterized.

**Synonyms:**

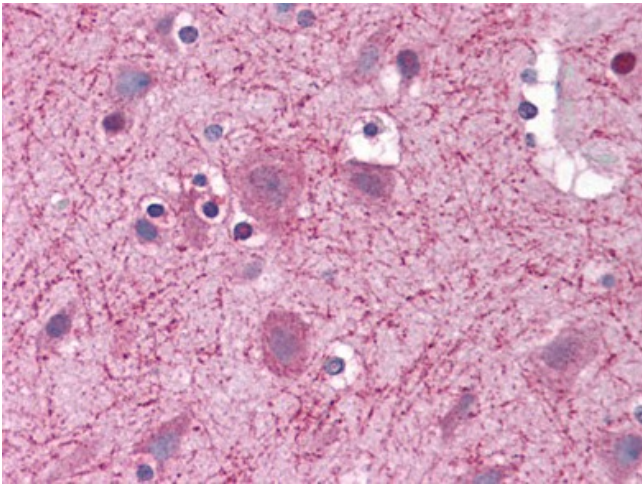
99D8.1, CCT-beta, CCTB, TCP-1 beta

**Protein Families:**

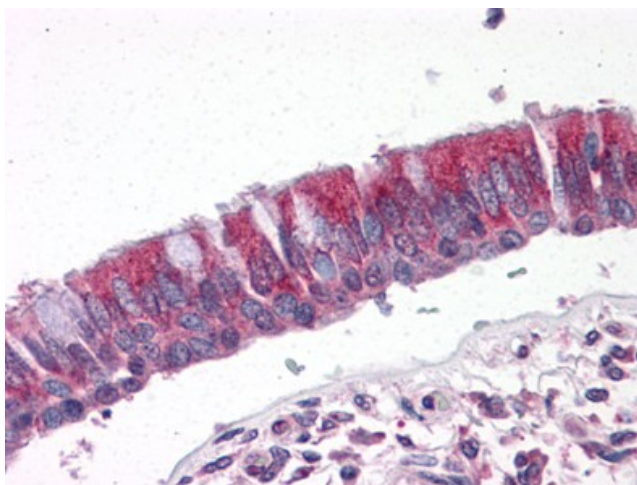
Druggable Genome

**Product images:**

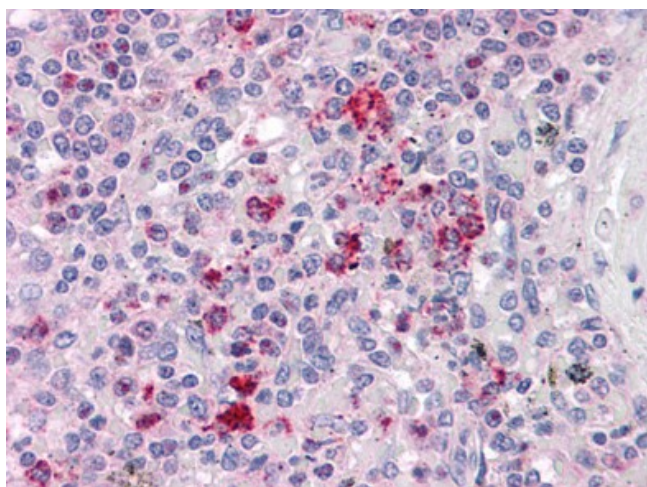
Sample (30 ug of whole cell lysate). A: Hep G2. B: Raji. 7.5% SDS PAGE. CCT2 antibody diluted at 1/1000.



Human Brain, Cortex: Formalin-Fixed, Paraffin-Embedded (FFPE)



Human Lung, Respiratory Epithelium: Formalin-Fixed, Paraffin-Embedded (FFPE)



Human Spleen: Formalin-Fixed, Paraffin-Embedded (FFPE)