

Product datasheet for **AP23625PU-N**

ELP3 (240-445) Rabbit Polyclonal Antibody

Product data:

Product Type:	Primary Antibodies
Applications:	IF, IHC, WB
Recommended Dilution:	Immunocytochemistry. Immunofluorescence: 1/100 - 1/200. Immunohistochemistry on Paraffin Sections: 10 µg/ml. Western Blot: 1/500 - 1/3000.
Reactivity:	Bovine, Human, Mouse, Zebrafish
Host:	Rabbit
Clonality:	Polyclonal
Immunogen:	Recombinant protein fragment containing a sequence corresponding to a region within amino acids 240 and 445 of ELP3
Specificity:	This antibody reacts to Elongation Protein 3 Homolog (ELP3) at aa 240-445).
Formulation:	0.1 M Tris-glycine, pH 7.0 containing 10% Glycerol and 0.01% Thimerosal State: Aff - Purified State: Liquid purified Ig fraction
Concentration:	lot specific
Purification:	Immunoaffinity Chromatography
Conjugation:	Unconjugated
Storage:	Store the antibody (in aliquots) at -20°C. Avoid repeated freezing and thawing.
Stability:	Shelf life: one year from despatch.
Gene Name:	elongator acetyltransferase complex subunit 3
Database Link:	Entrez Gene 55140 Human Q9H9T3



[View online »](#)

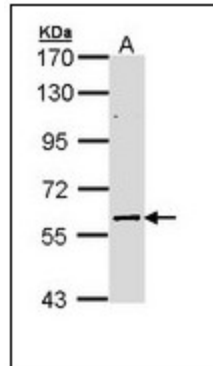
Background:

Catalytic histone acetyltransferase subunit of the RNA polymerase II elongator complex, which is a component of the RNA polymerase II (Pol II) holoenzyme and is involved in transcriptional elongation. Elongator may play a role in chromatin remodeling and is involved in acetylation of histones H3 and probably H4. May also have a methyltransferase activity. Involved in cell migration.

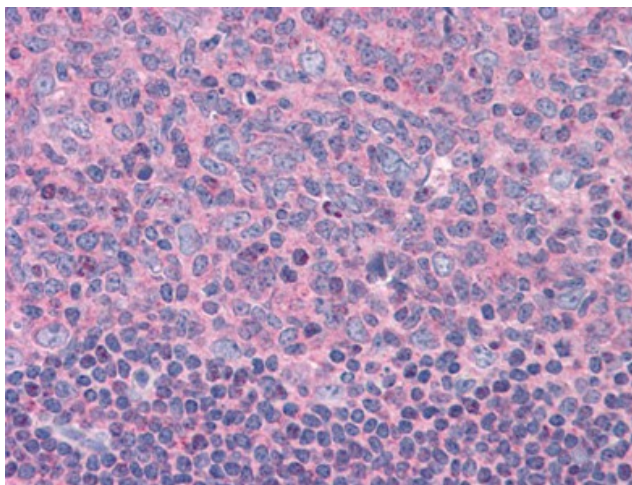
Synonyms:

Elongator complex protein 3

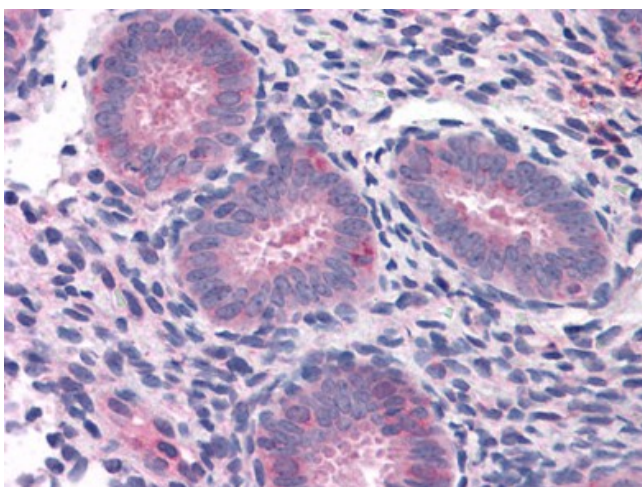
Product images:



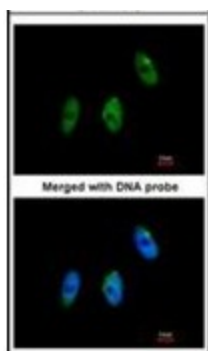
Sample (30 ug of whole cell lysate). A: NT2D1 B: IMR32 7.5% SDS PAGE ELP3 antibody ELP3 antibody diluted at 1/2000



Human Tonsil: Formalin-Fixed, Paraffin-Embedded (FFPE)



Human Uterus: Formalin-Fixed, Paraffin-Embedded (FFPE)



Immunofluorescence analysis of paraformaldehyde-fixed HeLa, using ELP3 antibody at 1/100 dilution.