

## Product datasheet for **AP23624PU-N**

### DPP8 Rabbit Polyclonal Antibody

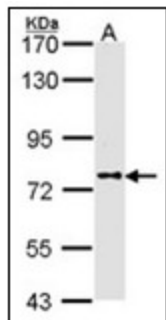
#### Product data:

Product Type:	Primary Antibodies
Applications:	IF, IHC, WB
Recommended Dilution:	<b>Immunocytochemistry.</b> <b>Immunofluorescence:</b> 1/100 - 1/200. <b>Immunohistochemistry on Paraffin Sections:</b> 10 µg/ml. <b>Western Blot:</b> 1/500 - 1/3000.
Reactivity:	Human
Host:	Rabbit
Clonality:	Polyclonal
Immunogen:	Synthetic Human DPRP1 - KLH conjugated
Specificity:	This antibody reacts to Dipeptidylpeptidase 8 (DPP8).
Formulation:	0.1 M Tris-glycine, pH 7.0 containing 10% Glycerol and 0.01% Thimerosal State: Aff - Purified State: Liquid purified Ig fraction
Concentration:	lot specific
Purification:	Immunoaffinity Chromatography
Conjugation:	Unconjugated
Storage:	Store the antibody at -20°C. Avoid repeated freezing and thawing.
Stability:	Shelf life: one year from despatch.
Gene Name:	dipeptidyl peptidase 8
Database Link:	<a href="#">Entrez Gene 54878 Human</a> <a href="#">Q6V1X1</a>
Synonyms:	MSTP097, MSTP135, MSTP141, Dipeptidyl peptidase 8, DPPVIII
Protein Families:	Druggable Genome, Protease, Transmembrane

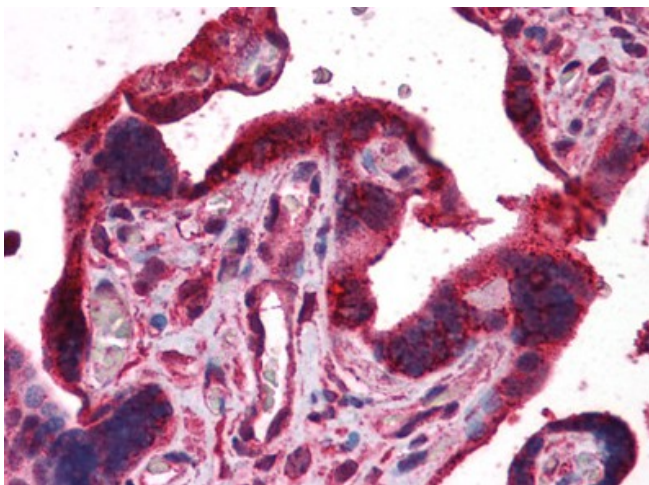


[View online »](#)

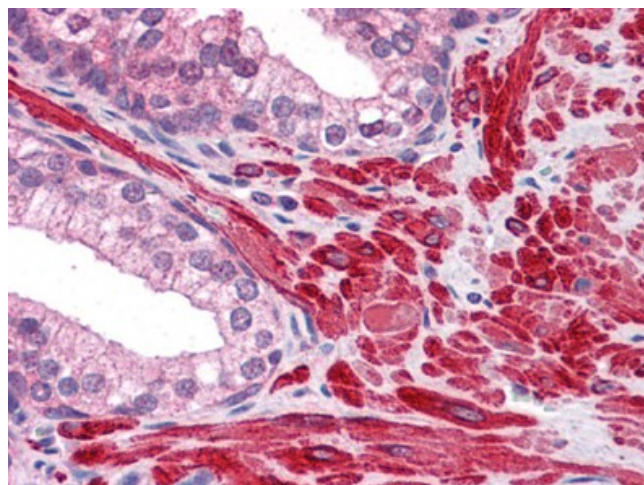
## Product images:



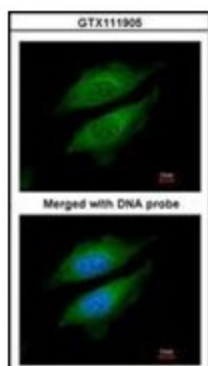
Sample (30 ug of whole cell lysate). A: A431. 7.5% SDS PAGE. DPP8 antibody. DPP8 antibody diluted at 1/1000.



Human Placenta: Formalin-Fixed, Paraffin-Embedded (FFPE)



Human Prostate: Formalin-Fixed, Paraffin-Embedded (FFPE)



Immunofluorescence analysis of paraformaldehyde-fixed HeLa, using DPRP1 antibody at 1/200 dilution.