

Product datasheet for **AP23621PU-N**

PAK1 (245-490) Rabbit Polyclonal Antibody

Product data:

Product Type:	Primary Antibodies
Applications:	IHC, WB
Recommended Dilution:	Immunohistochemistry on Paraffin Sections: 10 µg/ml. Western Blot: 1/500 - 1/3000.
Reactivity:	Bovine, Human, Mouse, Rat, Zebrafish
Host:	Rabbit
Clonality:	Polyclonal
Immunogen:	Recombinant protein fragment containing a sequence corresponding to a region within amino acids 245 and 490 of Human PAK1
Specificity:	This antibody reacts to PAK1 at aa 245-490.
Formulation:	0.1 M Tris-glycine, pH 7.0 containing 10% Glycerol and 0.01% Thimerosal State: Aff - Purified State: Liquid purified Ig fraction
Concentration:	lot specific
Purification:	Immunoaffinity Chromatography
Conjugation:	Unconjugated
Storage:	Store the antibody (in aliquots) at -20°C. Avoid repeated freezing and thawing.
Stability:	Shelf life: one year from despatch.
Gene Name:	p21 (RAC1) activated kinase 1
Database Link:	Entrez Gene 18479 Mouse Entrez Gene 29431 Rat Entrez Gene 5058 Human Q13153
Background:	PAK1, a PAK (STE20) type protein kinase, is an effector for the small GTP binding proteins Cdc42 and Rac in the regulation of cell motility and morphology. The activated protein has been shown to act on a variety of targets, including actin-binding protein filamin A, myosin light chain kinase, histone H3 and the stress-activated protein kinase JNK1. The PAK1 gene has been mapped to chromosome 11q13, a region of amplification in a subset of estrogen receptor positive breast carcinomas prone to metastasis.



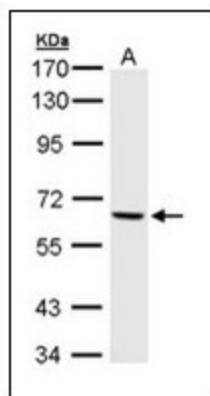
[View online »](#)

Synonyms: PAK 1, PAK-1, Alpha-PAK, PAK alpha, p21-activated kinase 1, p65-PAK

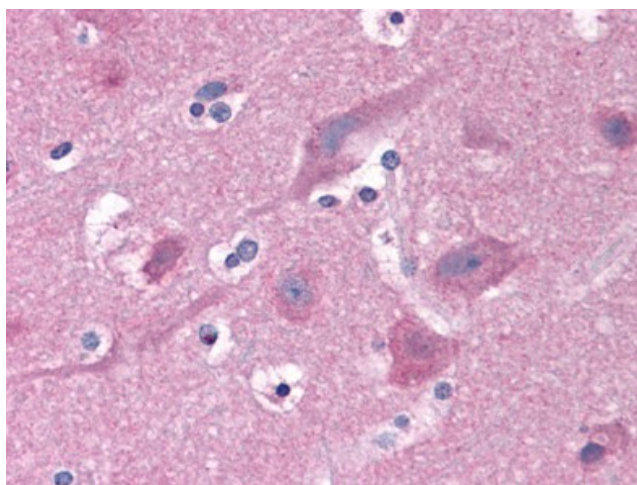
Protein Families: Druggable Genome, Protein Kinase, Stem cell - Pluripotency

Protein Pathways: Axon guidance, Chemokine signaling pathway, Epithelial cell signaling in Helicobacter pylori infection, ErbB signaling pathway, Fc gamma R-mediated phagocytosis, Focal adhesion, MAPK signaling pathway, Natural killer cell mediated cytotoxicity, Regulation of actin cytoskeleton, Renal cell carcinoma, T cell receptor signaling pathway

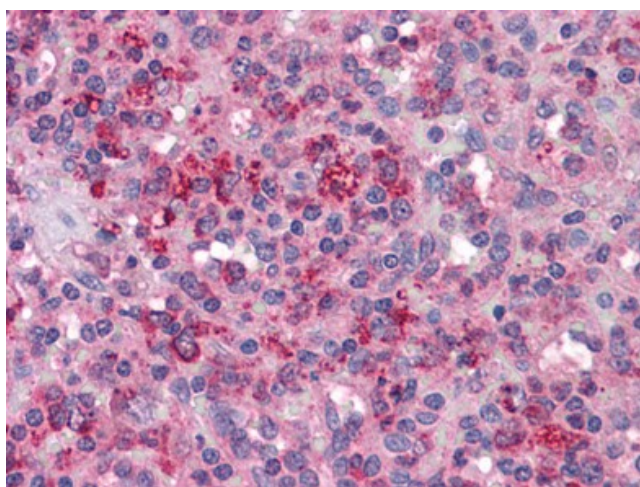
Product images:



Sample (30 ug of whole cell lysate). A: A431. 7.5% SDS PAGE. PAK1 antibody diluted at 1/1000



Human Brain, Cortex: Formalin-Fixed, Paraffin-Embedded (FFPE)



Human Spleen: Formalin-Fixed, Paraffin-Embedded (FFPE)