

## Product datasheet for **AP23620PU-N**

### **ACTN2 (215-500) Rabbit Polyclonal Antibody**

#### **Product data:**

Product Type:	Primary Antibodies
Applications:	IF, IHC, WB
Recommended Dilution:	<b>Immunocytochemistry.</b> <b>Immunofluorescence:</b> 1/100 - 1/200. <b>Immunohistochemistry on Paraffin Sections:</b> 10 µg/ml. <b>Western Blot:</b> 1/500 - 1/3000.
Reactivity:	Bovine, Human, Mouse, Rat, Zebrafish
Host:	Rabbit
Clonality:	Polyclonal
Immunogen:	Recombinant protein fragment containing a sequence corresponding to a region within amino acids 215 and 500 of actinin, alpha 2
Specificity:	This antibody reacts to alpha Actinin 2 at aa 215-500.
Formulation:	0.1 M Tris-glycine, pH 7.0 containing 10% Glycerol and 0.01% Thimerosal State: Aff - Purified State: Liquid purified Ig fraction
Concentration:	lot specific
Purification:	Immunoaffinity Chromatography
Conjugation:	Unconjugated
Storage:	Store the antibody (in aliquots) at -20°C. Avoid repeated freezing and thawing.
Stability:	Shelf life: one year from despatch.
Gene Name:	actinin alpha 2
Database Link:	<a href="#">Entrez Gene 11472 Mouse</a> <a href="#">Entrez Gene 291245 Rat</a> <a href="#">Entrez Gene 88 Human</a> <a href="#">P35609</a>



[View online »](#)

**Background:**

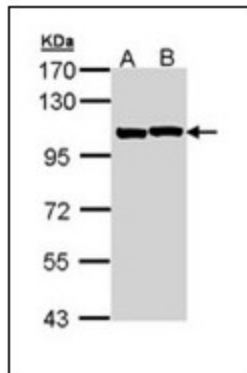
Alpha actinins belong to the spectrin gene superfamily which represents a diverse group of cytoskeletal proteins, including the alpha and beta spectrins and dystrophins. Alpha actinin is an actin-binding protein with multiple roles in different cell types. In nonmuscle cells, the cytoskeletal isoform is found along microfilament bundles and adherens-type junctions, where it is involved in binding actin to the membrane.

**Synonyms:**

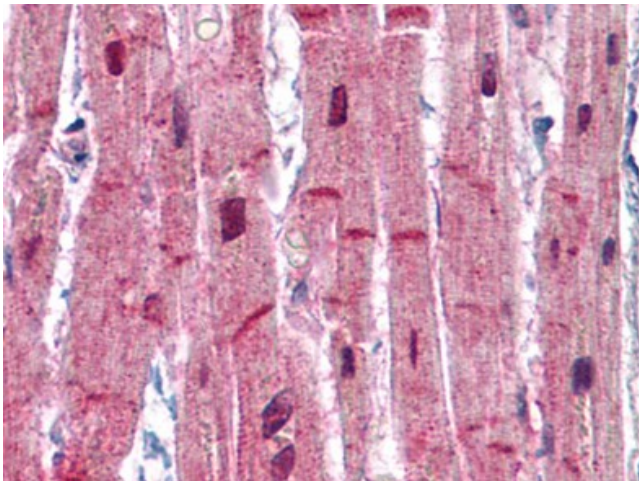
Alpha actinin skeletal muscle isoform 2

**Protein Pathways:**

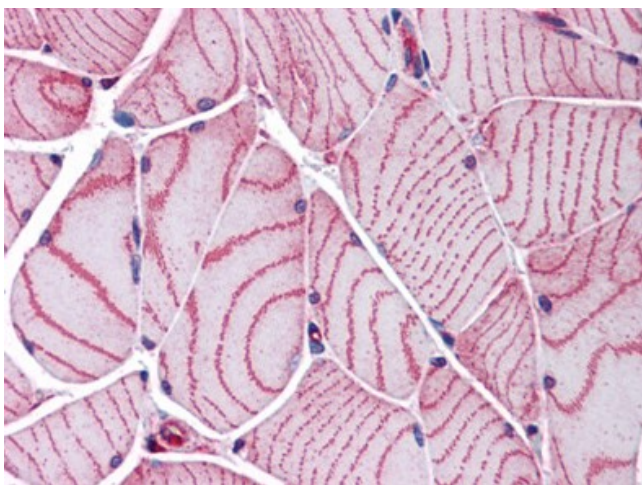
Adherens junction, Arrhythmogenic right ventricular cardiomyopathy (ARVC), Focal adhesion, Leukocyte transendothelial migration, Regulation of actin cytoskeleton, Systemic lupus erythematosus, Tight junction

**Product images:**


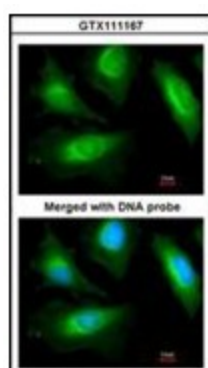
Sample (30 ug of whole cell lysate). A: A431. B: H1299. 7.5% SDS PAGE. ACTN2 antibody diluted at 1/1000.



Human Heart: Formalin-Fixed, Paraffin-Embedded (FFPE)



Human Skeletal Muscle: Formalin-Fixed, Paraffin-Embedded (FFPE)



Immunofluorescence analysis of paraformaldehyde-fixed HeLa, using actinin, alpha 2 antibody at 1/200 dilution.