

Product datasheet for **AP23617PU-N**

Complement C9 (C9) (184-411) Rabbit Polyclonal Antibody

Product data:

Product Type:	Primary Antibodies
Applications:	IF, IHC, WB
Recommended Dilution:	Immunocytochemistry: 1/100 - 1/200. Immunofluorescence: 1/100 - 1/200. Immunohistochemistry on Paraffin Sections: 10 µg/ml. Western Blot: 1/500 - 1/3000.
Reactivity:	Human
Host:	Rabbit
Clonality:	Polyclonal
Immunogen:	Recombinant protein fragment containing a sequence corresponding to a region within amino acids 184 and 411 of Complement C9.
Specificity:	This antibody reacts to Complement Component C9 at 184-411.
Formulation:	PBS, pH 7.0 containing 20% Glycerol and 0.025% Proclin300 State: Aff - Purified State: Liquid purified Ig fraction
Concentration:	lot specific
Purification:	Immunoaffinity Chromatography
Conjugation:	Unconjugated
Storage:	Store the antibody (in aliquots) at -20°C. Avoid repeated freezing and thawing.
Stability:	Shelf life: one year from despatch.
Gene Name:	complement component 9
Database Link:	Entrez Gene 735 Human P02748
Background:	Constituent of the membrane attack complex (MAC) that plays a key role in the innate and adaptive immune response by forming pores in the plasma membrane of target cells. C9 is the pore-forming subunit of the MAC.
Synonyms:	Complement component C9, Complement 9

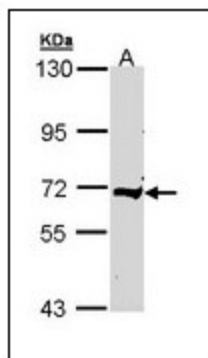


[View online »](#)

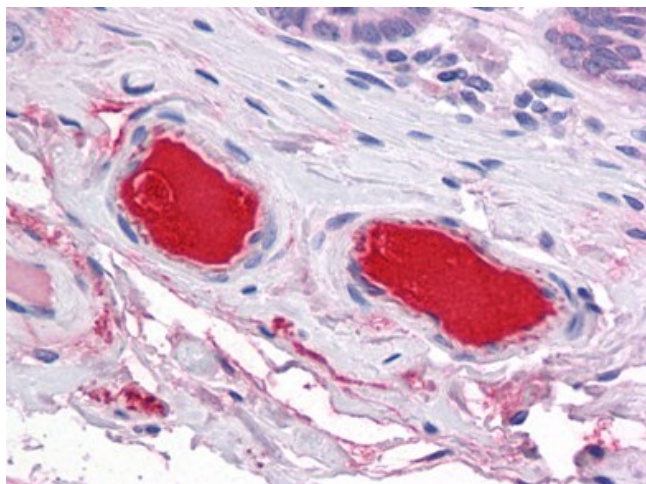
Protein Families: Druggable Genome

Protein Pathways: Complement and coagulation cascades, Prion diseases, Systemic lupus erythematosus

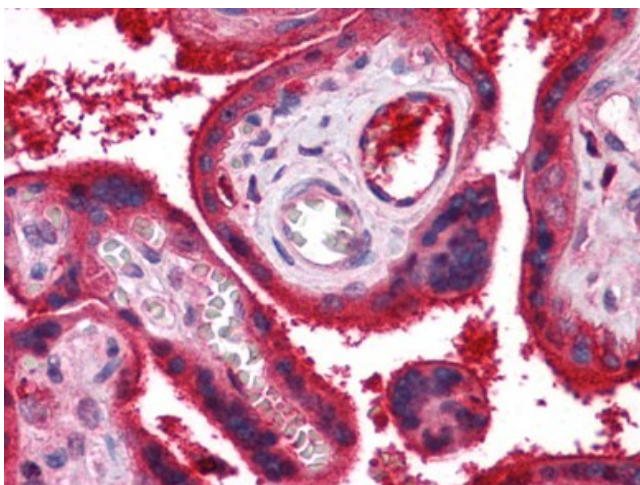
Product images:



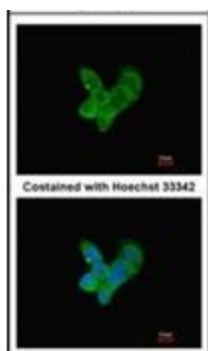
Sample (30 ug of whole cell lysate). A: Raji. 7.5% SDS PAGE. C9 antibody diluted at 1:500.



Human Small Intestine, Vessels: Formalin-Fixed, Paraffin-Embedded (FFPE)



Human Placenta: Formalin-Fixed, Paraffin-Embedded (FFPE)



Immunofluorescence analysis of methanol-fixed HepG2, using Complement C9 antibody at 1/200 dilution.