

Product datasheet for **AP23614PU-N**

LHX8 (1-321) Rabbit Polyclonal Antibody

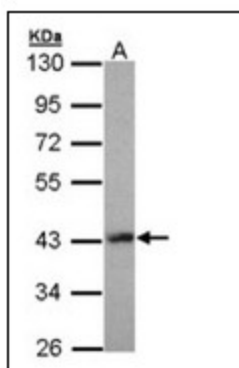
Product data:

Product Type:	Primary Antibodies
Applications:	IHC, WB
Recommended Dilution:	Immunohistochemistry on Paraffin Sections: 10 µg/ml. Western Blot: 1/1000 - 1/10000.
Reactivity:	Human, Mouse, Porcine, Rat, Zebrafish
Host:	Rabbit
Clonality:	Polyclonal
Immunogen:	Recombinant human LIM homeobox 8 protein fragment containing a sequence corresponding to a region within aa 1 - 321 of the human protein.
Specificity:	This antibody reacts to LIM/Homeobox Protein Lhx8 (LHX8) at aa 1-321.
Formulation:	0.1 M Tris-glycine, pH 7, 10% Glycerol, 0.01% Thimerosal State: Aff - Purified State: Liquid purified Ig fraction
Concentration:	lot specific
Purification:	Immunoaffinity Chromatography
Conjugation:	Unconjugated
Storage:	Store the antibody (in aliquots) at -20°C. Avoid repeated freezing and thawing.
Stability:	Shelf life: one year from despatch.
Gene Name:	LIM homeobox 8
Database Link:	Entrez Gene 16875 Mouse Entrez Gene 365963 Rat Entrez Gene 431707 Human Q68G74
Background:	LHX8 is a member of the LIM homeobox family of proteins, which are involved in patterning and differentiation of various tissue types. These proteins contain two tandemly repeated cysteine-rich double-zinc finger motifs known as LIM domains, in addition to a DNA-binding homeodomain. This family member is a transcription factor that plays a role in tooth morphogenesis. It is also involved in oogenesis and in neuronal differentiation.
Synonyms:	LHX8, LIM/homeobox protein Lhx8, LIM homeobox protein 8

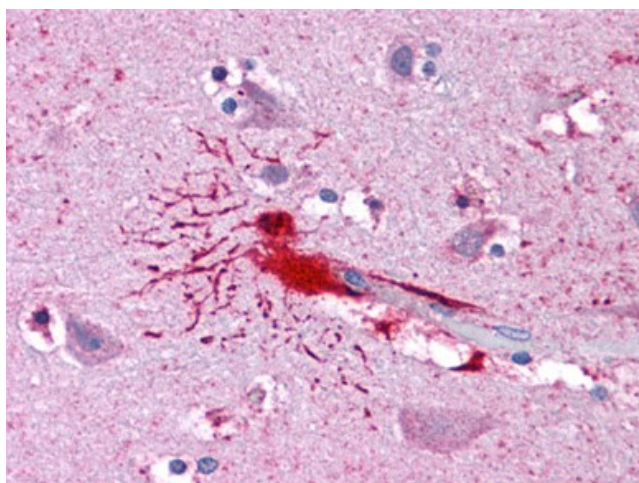


[View online »](#)

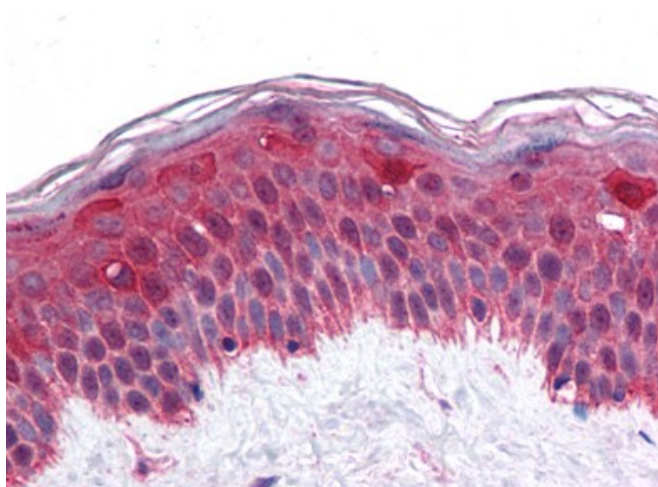
Product images:



Sample (30 ug of whole cell lysate). A: Molt-4.
10% SDS PAGE. LHX8 antibody diluted at 1/5000



Human Brain, Cortex: Formalin-Fixed, Paraffin-Embedded (FFPE)



Human Skin: Formalin-Fixed, Paraffin-Embedded (FFPE)