

## Product datasheet for **AP23613PU-N**

### **SNAP23 (1-132) Rabbit Polyclonal Antibody**

#### **Product data:**

Product Type:	Primary Antibodies
Applications:	IHC, WB
Recommended Dilution:	<b>Immunohistochemistry on Paraffin Sections:</b> 10 µg/ml. <b>Western Blot:</b> 1/500 - 1/3000.
Reactivity:	Human
Host:	Rabbit
Clonality:	Polyclonal
Immunogen:	Recombinant protein fragment containing a sequence corresponding to a region within amino acids 1 and 132 of Human SNAP23
Specificity:	This antibody reacts to Snap-23 Protein (SNAP23) at aa 1-132.
Formulation:	0.1 M Tris-glycine, pH 7.0 containing 10% Glycerol and 0.01% Thimerosal State: Aff - Purified State: Liquid purified Ig fraction
Concentration:	lot specific
Purification:	Immunoaffinity Chromatography
Conjugation:	Unconjugated
Storage:	Store the antibody (in aliquots) at -20°C. Avoid repeated freezing and thawing.
Stability:	Shelf life: one year from despatch.
Gene Name:	synaptosome associated protein 23kDa
Database Link:	<a href="#">Entrez Gene 8773 Human O00161</a>
Background:	Specificity of vesicular transport is regulated, in part, by the interaction of a vesicle-associated membrane protein termed synaptobrevin/VAMP with a target compartment membrane protein termed syntaxin. These proteins, together with SNAP25 (synaptosome-associated protein of 25 kDa), form a complex which serves as a binding site for the general membrane fusion machinery.
Synonyms:	SNAP-23

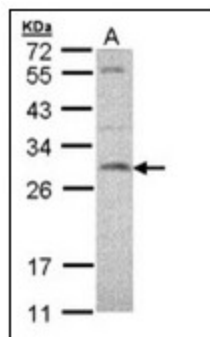


[View online »](#)

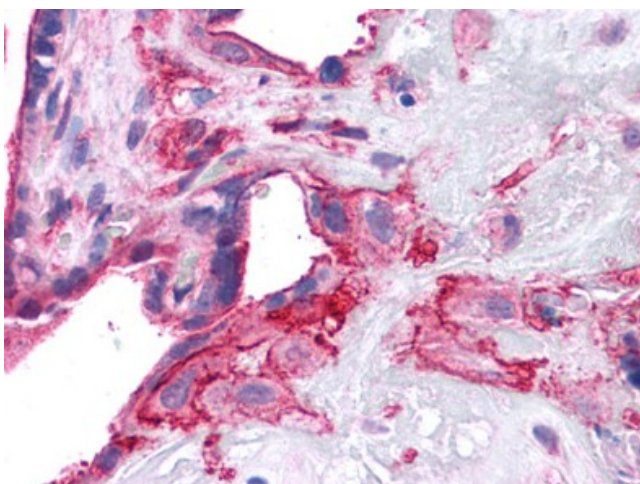
Protein Families: Druggable Genome

Protein Pathways: SNARE interactions in vesicular transport

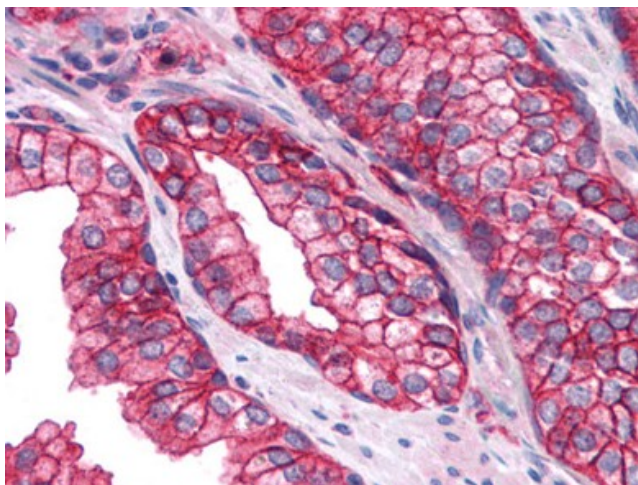
### Product images:



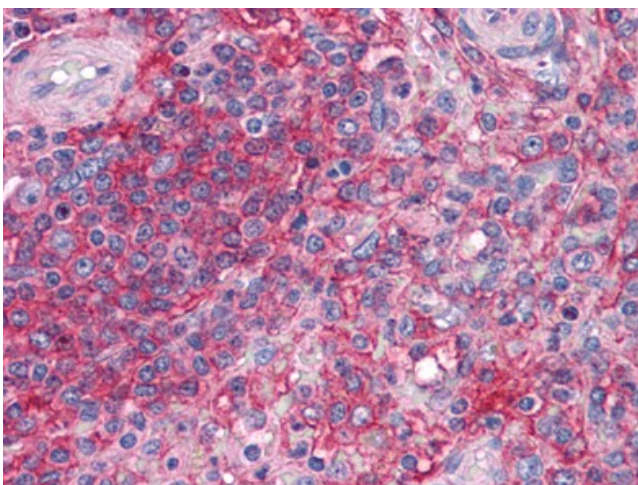
Sample (30 ug of whole cell lysate). A: H1299.  
12% SDS PAGE. SNAP23 antibody diluted at  
1/1000



Human Placenta: Formalin-Fixed, Paraffin-  
Embedded (FFPE)



Human Prostate: Formalin-Fixed, Paraffin-Embedded (FFPE)



Human Spleen: Formalin-Fixed, Paraffin-Embedded (FFPE)