

Product datasheet for **AP23611PU-N**

GPR32 Rabbit Polyclonal Antibody

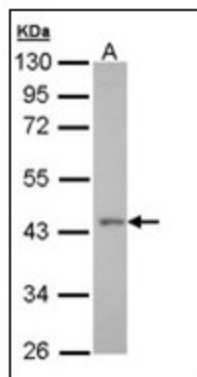
Product data:

| | |
|-----------------------|---|
| Product Type: | Primary Antibodies |
| Applications: | IHC, WB |
| Recommended Dilution: | Immunohistochemistry on Paraffin Sections: 10 µg/ml. Western Blot: 1/500 - 1/3000. |
| Reactivity: | Human |
| Host: | Rabbit |
| Clonality: | Polyclonal |
| Immunogen: | Synthetic human GPR32 peptide - KLH conjugated |
| Specificity: | This antibody reacts to G Protein-Coupled Receptor GPR32. |
| Formulation: | 0.1 M Tris-glycine, pH 7.0 containing 10% Glycerol and 0.01% Thimerosal State: Liquid purified Ig fraction |
| Concentration: | lot specific |
| Purification: | Immunoaffinity Chromatography |
| Conjugation: | Unconjugated |
| Storage: | Store the antibody at -20°C. Avoid repeated freezing and thawing. |
| Stability: | Shelf life: one year from despatch. |
| Gene Name: | G protein-coupled receptor 32 |
| Database Link: | Entrez Gene 2854 Human O75388 |
| Synonyms: | G-protein coupled receptor 32 |
| Protein Families: | Druggable Genome, GPCR, Transmembrane |

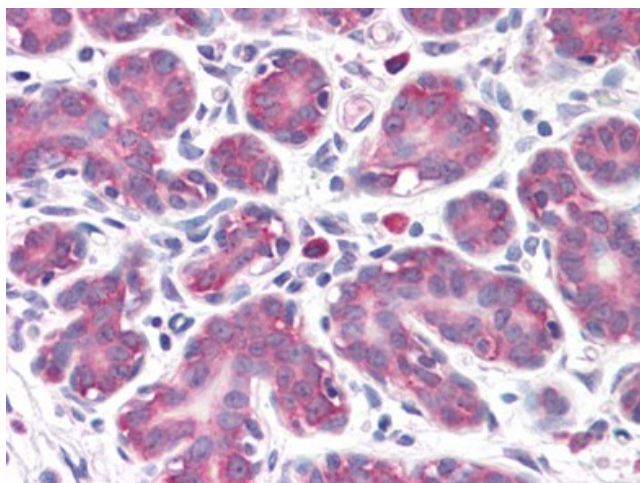


[View online »](#)

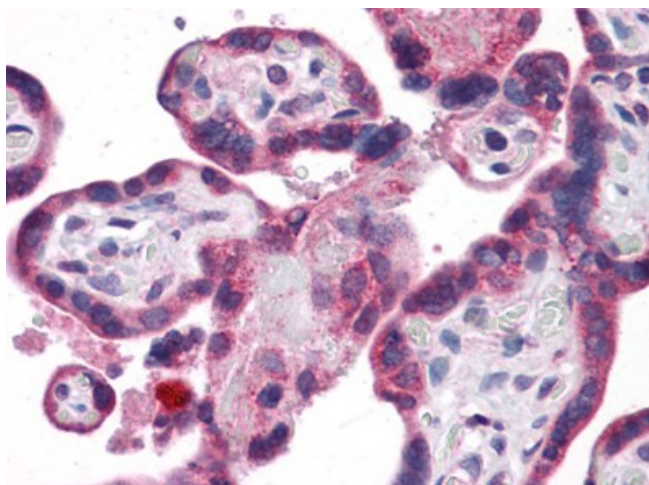
Product images:



Sample (30 ug of whole cell lysate). A: H1299.
10% SDS PAGE. GPR32 antibody diluted at 1/500



Human Breast: Formalin-Fixed, Paraffin-Embedded (FFPE)



Human Prostate: Formalin-Fixed, Paraffin-Embedded (FFPE)