

## Product datasheet for **AP23608PU-N**

### **BRCC45 (BRE) (9-338) Rabbit Polyclonal Antibody**

#### **Product data:**

Product Type:	Primary Antibodies
Applications:	IF, IHC, WB
Recommended Dilution:	<b>Immunocytochemistry.</b> <b>Immunofluorescence:</b> 1/100 - 1/200. <b>Immunohistochemistry on Paraffin Sections:</b> 10 µg/ml. <b>Western Blot:</b> 1/500 - 1/3000.
Reactivity:	Bovine, Human, Mouse, Rat, Zebrafish
Host:	Rabbit
Clonality:	Polyclonal
Immunogen:	Recombinant protein fragment containing a sequence corresponding to a region within amino acids 9 and 338 of BRE
Specificity:	This antibody reacts to human Brain And Reproductive Organ-expressed Protein (BRE) at aa 9-228.
Formulation:	0.1 M Tris-glycine, pH 7.0 containing 10% Glycerol and 0.01% Thimerosal State: Aff - Purified State: Liquid purified Ig fraction
Concentration:	lot specific
Purification:	Immunoaffinity Chromatography
Conjugation:	Unconjugated
Storage:	Store the antibody (in aliquots) at -20°C. Avoid repeated freezing and thawing.
Stability:	Shelf life: one year from despatch.
Gene Name:	brain and reproductive organ-expressed (TNFRSF1A modulator)
Database Link:	<u><a href="#">Entrez Gene 107976 Mouse</a></u> <u><a href="#">Entrez Gene 362704 Rat</a></u> <u><a href="#">Entrez Gene 9577 Human Q9NXR7</a></u>



[View online »](#)

**Background:**

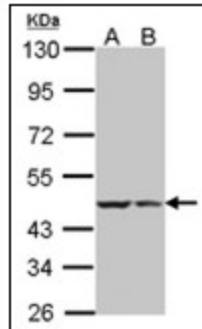
Component of the BRCA1-A complex, a complex that specifically recognizes 'Lys-63'-linked ubiquitinated histones H2A and H2AX at DNA lesions sites, leading to target the BRCA1-BARD1 heterodimer to sites of DNA damage at double-strand breaks (DSBs). The BRCA1-A complex also possesses deubiquitinase activity that specifically removes 'Lys-63'-linked ubiquitin on histones H2A and H2AX.

**Synonyms:**

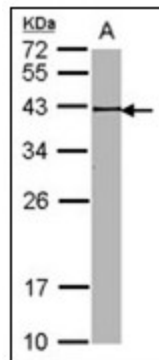
BRE, BRCC45

**Protein Families:**

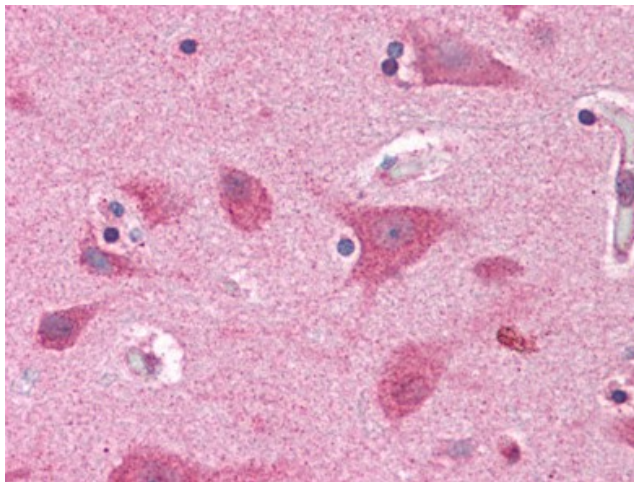
Druggable Genome

**Product images:**


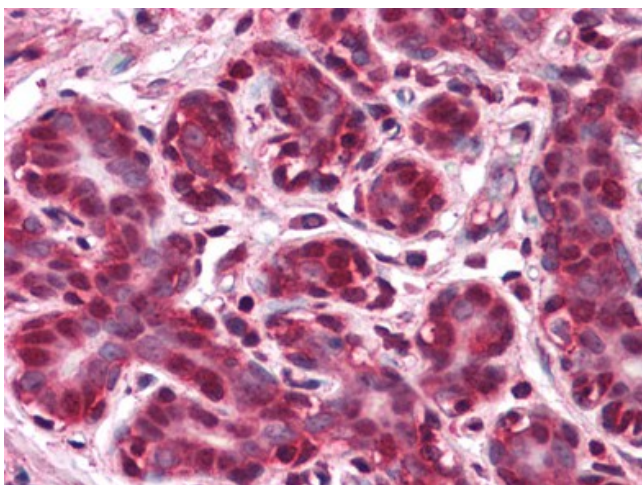
Sample (30 g of whole cell lysate). A:HeLa S3.  
B:Hep G2. 7.5% SDS PAGE. BRE antibody diluted at 1/500



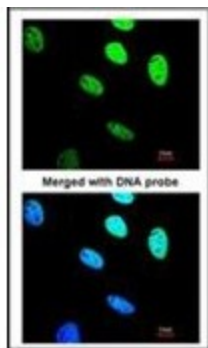
Sample (30 ug of whole cell lysate). A: NIH-3T3.  
12% SDS PAGE. BRE antibody. BRE antibody diluted at 1/1000.



Human Brain, Cortex: Formalin-Fixed, Paraffin-Embedded (FFPE)



Human Breast: Formalin-Fixed, Paraffin-Embedded (FFPE)



Immunofluorescence analysis of paraformaldehyde-fixed HeLa, using BRE antibody at 1/200 dilution.