

Product datasheet for **AP23604PU-N**

TLR7 (900-950) Rabbit Polyclonal Antibody

Product data:

Product Type:	Primary Antibodies
Applications:	FC, IHC, WB
Recommended Dilution:	Flow Cytometry. Immunohistochemistry on Paraffin Sections: 10 µg/ml. Western Blot: 0.5 - 2 µg/ml.
Reactivity:	Bovine, Canine, Equine, Human, Monkey, Mouse, Rat
Host:	Rabbit
Isotype:	IgG
Clonality:	Polyclonal
Immunogen:	Synthetic peptide from a portion of amino acids 900-950 of Human TLR7
Specificity:	This antibody reacts to Toll-like Receptor 7 (TLR7) at aa 900-950.
Formulation:	PBS State: Purified State: Liquid purified Ig fraction Stabilizer: 0.05% BSA Preservative: 0.05% Sodium Azide
Concentration:	lot specific
Purification:	Protein G Chromatography
Conjugation:	Unconjugated
Storage:	Store undiluted at 2-8°C for one month or (in aliquots) at -20°C for longer. Avoid repeated freezing and thawing.
Stability:	Shelf life: one year from despatch.
Gene Name:	toll like receptor 7
Database Link:	Entrez Gene 170743 Mouse Entrez Gene 317468 Rat Entrez Gene 51284 Human Q9NYK1



[View online »](#)

Background:

Toll-like receptors (TLRs) are signaling molecules that recognize different microbial products during infection and serve as an important link between the innate and adaptive immune responses. These proteins act through adaptor molecules such as MyD88 and TIRAP to activate various kinases and transcription factors. TLR7, like TLRs 3, 8, and 9, is localized in intracellular acidic compartments such as the phagolysosome and will recognize some single-stranded RNA viruses such as vesicular stomatitis virus (VSV) and influenza virus. Activation of TLR7 by VSV results in stimulation of the immune response including IFN α secretion, suggesting the importance of TLR7 in virus recognition.

Synonyms:

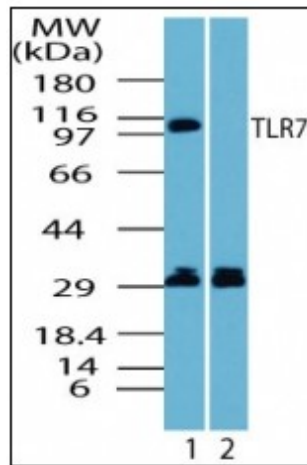
Toll-like receptor 7

Protein Families:

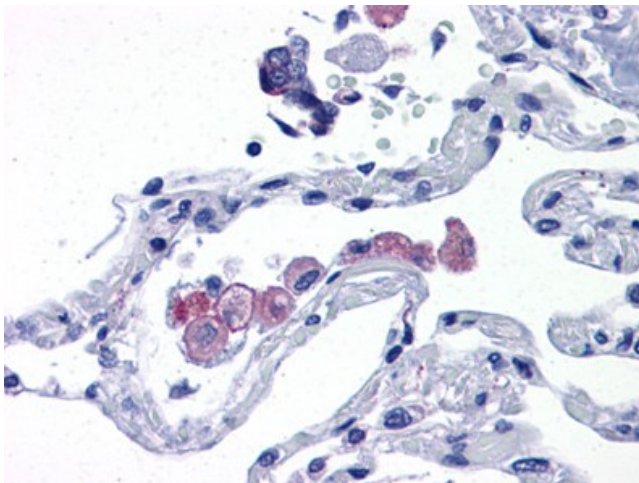
Druggable Genome, Transmembrane

Protein Pathways:

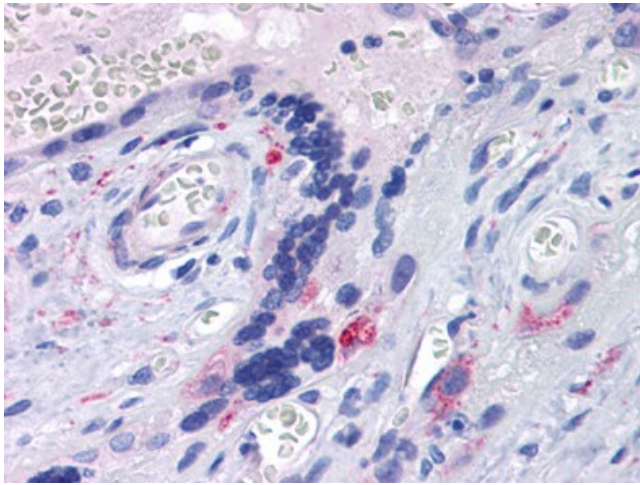
Toll-like receptor signaling pathway

Product images:


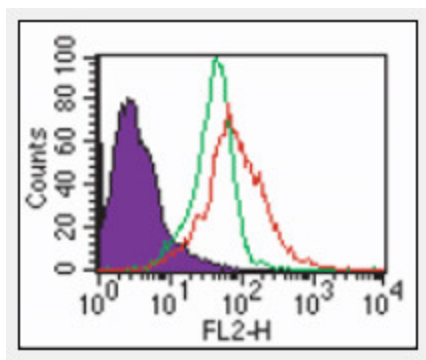
Western blot analysis of human TLR7 in Ramos cell lysate in the 1) absence and 2) presence of immunizing peptide using antibody at 1 μ g/ml.



Human Lung: Formalin-Fixed, Paraffin-Embedded (FFPE)



Human Placenta: Formalin-Fixed, Paraffin-Embedded (FFPE)



Intracellular staining by FACS analysis of TLR7 in human PBMCs using at 2 ug/ml. Shaded histogram represents cells alone; green represents rabbit IgG isotype control, ; red represents anti-TLR7 antibody. Goat anti-rabbit PE, was used as secondary.