

Product datasheet for **AP23603PU-N**

TLR7 (465-483) Rabbit Polyclonal Antibody

Product data:

Product Type:	Primary Antibodies
Applications:	IHC, WB
Recommended Dilution:	Immunohistochemistry on Paraffin Sections: 10 µg/ml. Western Blot: 1/500 - 1/1000.
Reactivity:	Human, Mouse
Host:	Rabbit
Isotype:	IgG
Clonality:	Polyclonal
Immunogen:	KLH-conjugated synthetic peptide corresponding to amino acids 465-483 of human TLR7.
Specificity:	This antibody reacts to Toll-like Receptor 7 (TLR7). It will cross-react with mouse TLR7.
Formulation:	PBS containing 0.05% sodium azide as preservative State: Liquid purified Ig fraction
Concentration:	lot specific
Purification:	Protein G Chromatography
Conjugation:	Unconjugated
Storage:	Store the antibody undiluted at 2-8°C for one month or (in aliquots) at -20°C for longer. Avoid repeated freezing and thawing.
Stability:	Shelf life: one year from despatch.
Gene Name:	toll like receptor 7
Database Link:	Entrez Gene 170743 Mouse Entrez Gene 51284 Human Q9NYK1



[View online »](#)

Background:

Toll-like receptors (TLRs) are signaling molecules that recognize different microbial products during infection and serve as an important link between the innate and adaptive immune responses. These proteins act through adaptor molecules such as MyD88 and TIRAP to activate various kinases and transcription factors. TLR7, like TLRs 3, 8, and 9, is localized in intracellular acidic compartments such as the phagolysosome and will recognize some single-stranded RNA viruses such as vesicular stomatitis virus (VSV) and influenza virus. Activation of TLR7 by VSV results in stimulation of the immune response including IFN α secretion, suggesting the importance of TLR7 in virus recognition.

Synonyms:

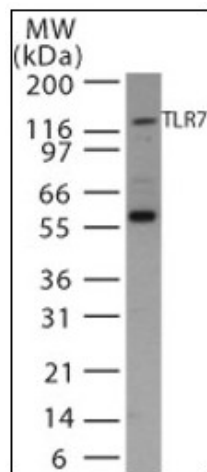
Toll-like receptor 7

Protein Families:

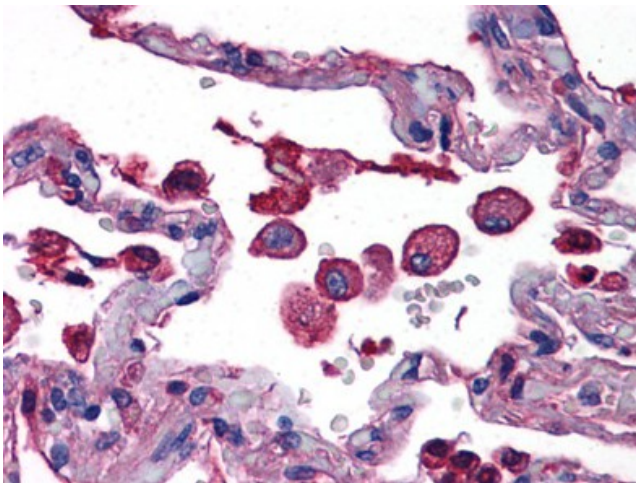
Druggable Genome, Transmembrane

Protein Pathways:

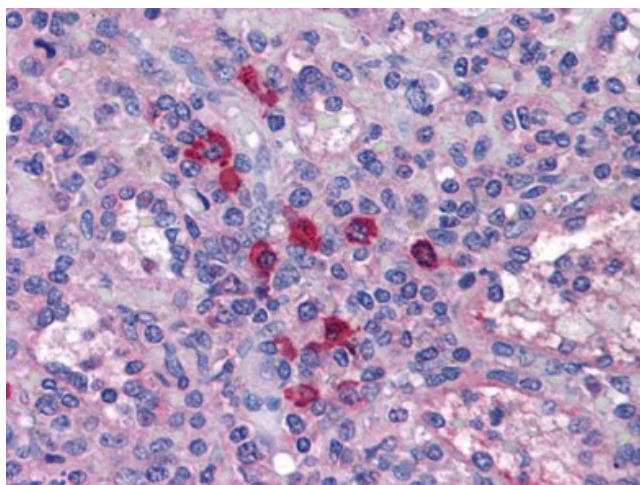
Toll-like receptor signaling pathway

Product images:


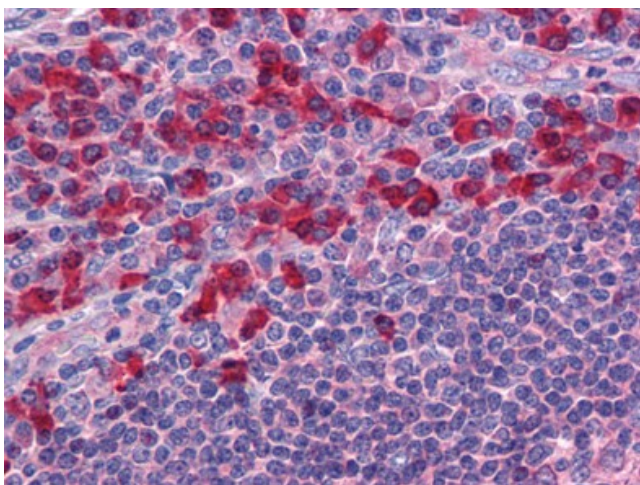
Western blot analysis of TLR7 in Ramos cell lysate using antibody at 1/500.



Human Lung: Formalin-Fixed, Paraffin-Embedded (FFPE)



Human Spleen: Formalin-Fixed, Paraffin-Embedded (FFPE)



Human Tonsil: Formalin-Fixed, Paraffin-Embedded (FFPE)