

Product datasheet for **AP23602PU-N**

TMS1 (PYCARD) (31-46) Rabbit Polyclonal Antibody

Product data:

Product Type:	Primary Antibodies
Applications:	IHC, WB
Recommended Dilution:	Immunohistochemistry on Paraffin Sections: 10 µg/ml. Western Blot: 1 - 2 µg/ml.
Reactivity:	Human
Host:	Rabbit
Isotype:	IgG
Clonality:	Polyclonal
Immunogen:	Synthetic peptide - KLH conjugated, Synthetic peptide
Specificity:	A mixture of synthetic peptides corresponding to amino acid residues 31-46 and 94-110 of human TMS1.
Formulation:	PBS containing 0.02% sodium azide. State: Liquid purified Ig fraction
Concentration:	lot specific
Purification:	Protein G Chromatography
Conjugation:	Unconjugated
Storage:	Store the antibody undiluted at 2-8°C for one month or (in aliquots) at -20°C for longer. Avoid repeated freezing and thawing.
Stability:	Shelf life: one year from despatch.
Gene Name:	PYD and CARD domain containing
Database Link:	Entrez Gene 29108 Human Q9ULZ3



[View online »](#)

Background:

Apoptosis is regulated by death domain (DD) and/or caspase recruitment domain (CARD) containing molecules and a caspase family of proteases. CARD containing cell death regulators include RAIDD, RICK, BCL10, Apaf-1, ARC, caspase-9, and caspase-2. A novel CARD domain containing protein was recently identified in human and mouse and designated ASC and TMS1. Ectopic expression of ASC/TMS1 induced apoptosis through activation of caspase-9 and inhibited the survival of human breast cancer cells. Overexpression of ASC/TMS1 induced DNA fragmentation. ASC/TMS1 is expressed in a variety of human and mouse tissues.

Synonyms:

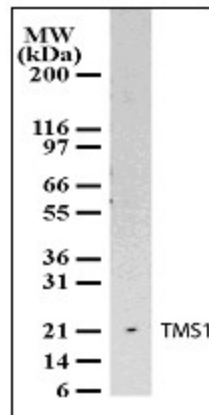
TMS1

Protein Families:

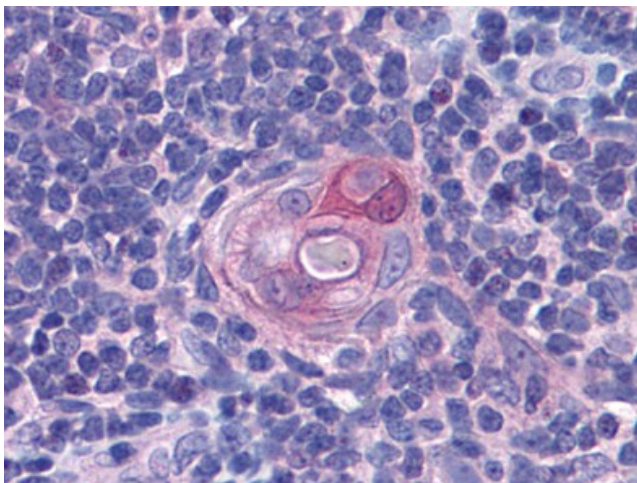
Druggable Genome

Protein Pathways:

Cytosolic DNA-sensing pathway, NOD-like receptor signaling pathway

Product images:


Western blot analysis for TMS1 using antibody at 2 ug/ml against 10 ug/lane of A549 cell lysate.



Human Thymus: Formalin-Fixed, Paraffin-Embedded (FFPE)