

## Product datasheet for **AP23596PU-N**

### Claudin 2 (CLDN2) (N-term) Rabbit Polyclonal Antibody

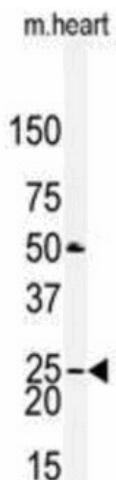
#### Product data:

Product Type:	Primary Antibodies
Applications:	IHC, WB
Recommended Dilution:	<b>Immunohistochemistry on Paraffin Sections:</b> 5 µg/ml. <b>Western Blot:</b> 1/1000.
Reactivity:	Human
Host:	Rabbit
Clonality:	Polyclonal
Immunogen:	KLH conjugated synthetic peptide between 135-164 amino acids from the N-terminal region of Human CLDN2.
Specificity:	This antibody reacts to the N-term of Claudin 2 (CLDN2).
Formulation:	PBS State: Purified State: Liquid purified Ig fraction Preservative: 0.09% Sodium Azide
Purification:	Immunoaffinity Chromatography
Conjugation:	Unconjugated
Storage:	Store undiluted at 2-8°C for one month or (in aliquots) at -20°C for longer. Avoid repeated freezing and thawing.
Stability:	Shelf life: one year from despatch.
Gene Name:	claudin 2
Database Link:	<a href="#">Entrez Gene 9075 Human P57739</a>
Synonyms:	SP82, CLD2
Protein Families:	Transmembrane
Protein Pathways:	Cell adhesion molecules (CAMs), Leukocyte transendothelial migration, Tight junction

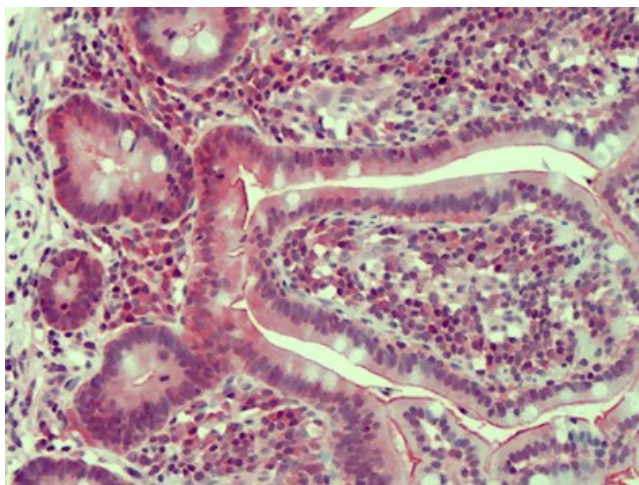


[View online »](#)

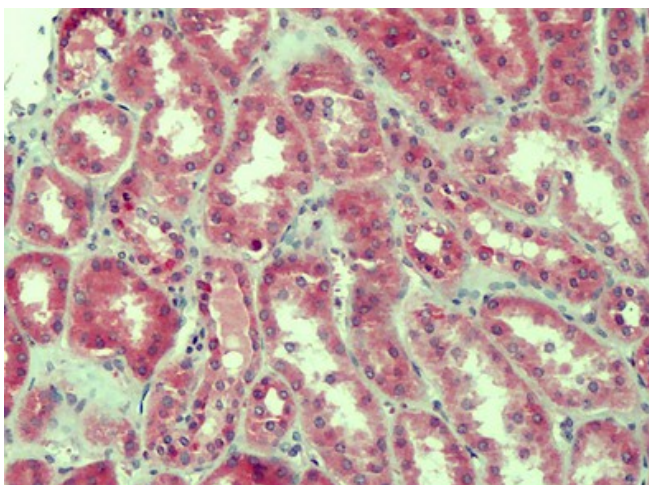
## Product images:



Western blot of anti-CLDN2 Antibody (N-term) Cat.-No AP23596PU-N in mouse heart tissue lysates (35 ug/lane). CLDN2 (arrow) was detected using the purified Pab (1/240 dilution).



Formalin-Fixed, Paraffin-Embedded Human Small Intestine stained with Claudin-2 / CLDN2 Antibody Cat.-No AP23596PU-N at 5 ug/ml after heat-induced antigen retrieval.



Formalin-Fixed, Paraffin-Embedded Human Kidney stained with Claudin-2 / CLDN2 Antibody Cat.-No AP23596PU-N at 5 ug/ml after heat-induced antigen retrieval.