

## Product datasheet for **AP23593PU-N**

### Vitamin D Binding protein (GC) Rabbit Polyclonal Antibody

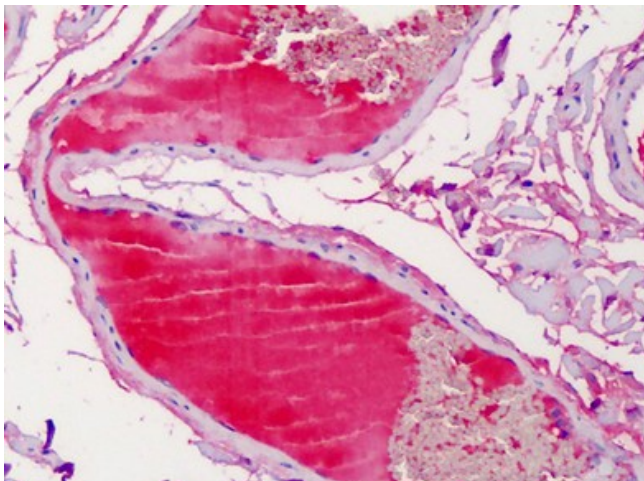
#### Product data:

Product Type:	Primary Antibodies
Applications:	ELISA, IHC
Recommended Dilution:	<b>ELISA.</b> <b>Immunohistochemistry on Paraffin Sections:</b> 5 µg/ml.
Reactivity:	Human
Host:	Rabbit
Isotype:	IgG
Clonality:	Polyclonal
Immunogen:	Native human vitamin D binding protein
Specificity:	Recognizes Vitamin D binding protein (VDBP), the major carrier protein of vitamin D that also transports components such as fatty acids and endotoxins and has an important role in the actin scavenging system. VDBP is a 52-58 kD plasma protein synthesized mainly by hepatocytes. Polymorphisms in the gene give rise to three major electrophoretic variants, Gc1, Gc1s and Gc1f that differ by amino acid substitutions as well as glycosylations. The physiological significance of these phenotypes has yet to be determined.
Formulation:	PBS containing 0.09% sodium azide as preservative State: Liquid purified Ig fraction
Concentration:	lot specific
Purification:	Protein G Chromatography
Conjugation:	Unconjugated
Storage:	Store the antibody undiluted at 2-8°C for one month or (in aliquots) at -20°C for longer. Avoid repeated freezing and thawing.
Stability:	Shelf life: one year from despatch.
Gene Name:	GC, vitamin D binding protein
Database Link:	<a href="#">Entrez Gene 2638 Human P02774</a>
Synonyms:	DBP, VDB, Group-specific component, Gc-globulin
Protein Families:	Secreted Protein

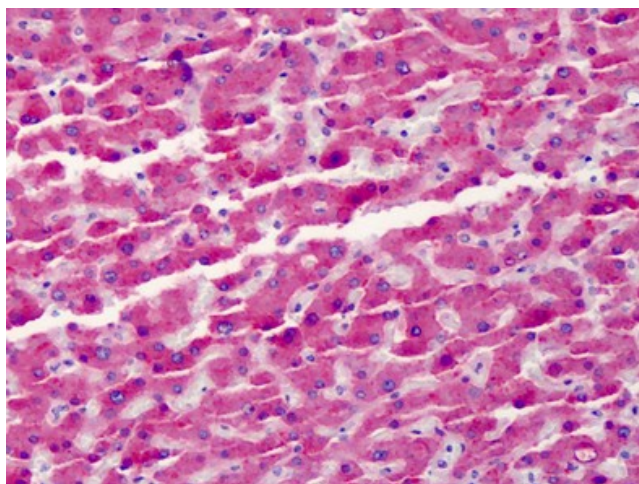


[View online »](#)

**Product images:**



Human Blood Plasma: Formalin-Fixed, Paraffin-Embedded (FFPE)



Human Liver: Formalin-Fixed, Paraffin-Embedded (FFPE)