

Product datasheet for **AP23592PU-N**

LEO1 pSer10 Rabbit Polyclonal Antibody

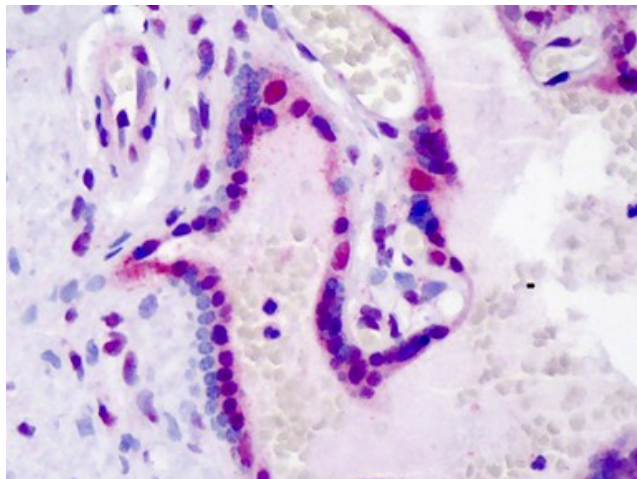
Product data:

Product Type:	Primary Antibodies
Applications:	IHC
Recommended Dilution:	DB: 1/500. Immunohistochemistry on Paraffin Sections: 5 µg/ml.
Reactivity:	Human
Host:	Rabbit
Clonality:	Polyclonal
Immunogen:	KLH conjugated synthetic phospho-peptide corresponding to amino acid residues surrounding S10 of human LEO1.
Specificity:	This antibody reacts to Ser10 phosphorylated Leo1, Paf1/RNA Polymerase II Complex Component, Homolog (<i>S. Cerevisiae</i>) (LEO1).
Formulation:	PBS containing 0.09% sodium azide as preservative State: Liquid purified Ig fraction
Purification:	Protein A Chromatography
Conjugation:	Unconjugated
Storage:	Store the antibody undiluted at 2-8°C for one month or (in aliquots) at -20°C for longer. Avoid repeated freezing and thawing.
Stability:	Shelf life: one year from despatch.
Gene Name:	LEO1 homolog, Paf1/RNA polymerase II complex component
Database Link:	Entrez Gene 123169 Human Q8WVCO
Synonyms:	LEO-1, RDL



[View online »](#)

Product images:



Human Placenta: Formalin-Fixed, Paraffin-Embedded (FFPE)