

Product datasheet for **AP23590PU-N**

Glutathione Peroxidase 1 (GPX1) Rabbit Polyclonal Antibody

Product data:

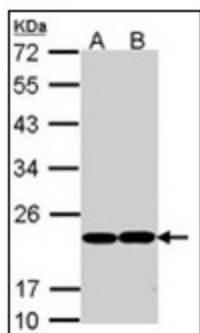
Product Type:	Primary Antibodies
Applications:	IF, IHC, WB
Recommended Dilution:	Immunocytochemistry. Immunofluorescence: 1/100 - 1/200. Immunohistochemistry on Paraffin Sections: 10 µg/ml. Western Blot: 1/500 - 1/3000.
Reactivity:	Human
Host:	Rabbit
Clonality:	Polyclonal
Immunogen:	KLH synthetic peptide containing a sequence corresponding to a region within amino acids 127 and 193 of Glutathione peroxidase 1.
Specificity:	This antibody recognizes Human Glutathione Peroxidase (GPX1). Predicted cross-reactivity based on amino acid sequence homology: Monkey (100%).
Formulation:	0.1 M Tris-glycine, pH 7.0 containing 20% Glycerol State: Liquid purified Ig fraction Preservative: 0.01% Thimerosal
Concentration:	lot specific
Purification:	Immunoaffinity Chromatography
Conjugation:	Unconjugated
Storage:	Upon receipt, store undiluted (in aliquots) at -20°C. Avoid repeated freezing and thawing.
Stability:	Shelf life: one year from despatch.
Gene Name:	glutathione peroxidase 1
Database Link:	Entrez Gene 2876 Human P07203
Synonyms:	GSHPx-1, Cellular glutathione peroxidase
Protein Families:	Druggable Genome



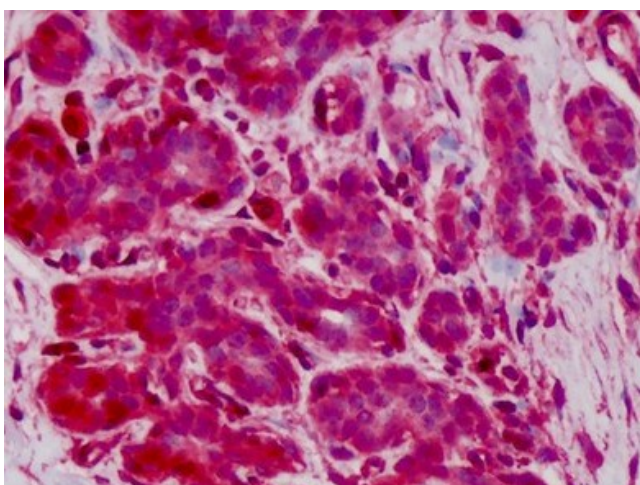
[View online »](#)

Protein Pathways: Amyotrophic lateral sclerosis (ALS), Arachidonic acid metabolism, Glutathione metabolism, Huntington's disease

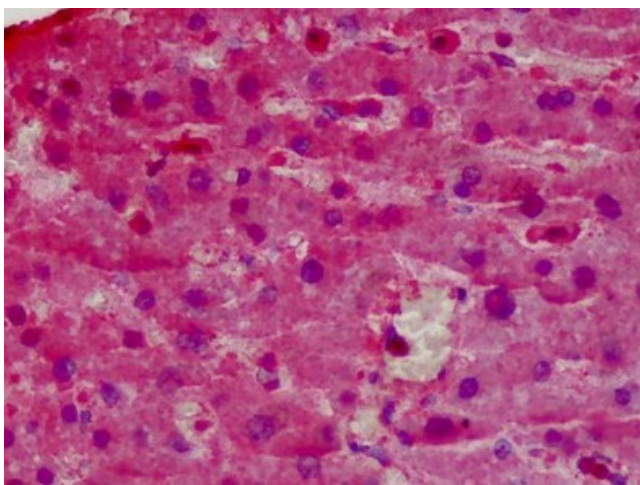
Product images:



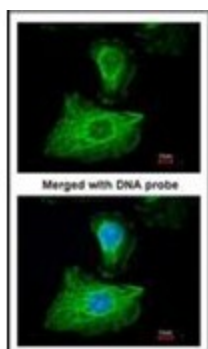
Sample (30 ug of whole cell lysate). A: Molt-4. B: Raji. 12% SDS PAGE. GPX1 antibody diluted at 1/1000.



Human Breast: Formalin-Fixed, Paraffin-Embedded (FFPE)



Human Liver: Formalin-Fixed, Paraffin-Embedded (FFPE)



Immunofluorescence analysis of paraformaldehyde-fixed HeLa, using Glutathione peroxidase 1 antibody at 1/200 dilution.