

## Product datasheet for **AP23589PU-N**

### Gelsolin (GSN) (161-369) Rabbit Polyclonal Antibody

#### Product data:

Product Type:	Primary Antibodies
Applications:	IF, IHC, WB
Recommended Dilution:	<b>Immunocytochemistry:</b> 1/100 - 1/200. <b>Immunofluorescence:</b> 1/100 - 1/200. <b>Immunohistochemistry on Paraffin Sections:</b> 10 µg/ml. <b>Western Blot:</b> 1/500 - 1/3000.
Reactivity:	Bovine, Human, Mouse, Rat
Host:	Rabbit
Clonality:	Polyclonal
Immunogen:	Recombinant protein fragment containing a sequence corresponding to a region within amino acids 161 and 369 of Gelsolin.
Specificity:	This antibody reacts to Gelsolin precursor/Actin-depolymerizing factor (GSN/ADF) (Brevin) (AGEL) at aa 161-369.
Formulation:	0.1 M Tris-glycine, pH 7.0 containing 20% Glycerol as stabilizer and 0.01% Thimerosal as preservative State: Aff - Purified State: Liquid purified Ig fraction
Concentration:	lot specific
Purification:	Immunoaffinity Chromatography
Conjugation:	Unconjugated
Storage:	Upon receipt, store undiluted (in aliquots) at -20°C. Avoid repeated freezing and thawing.
Stability:	Shelf life: one year from despatch.
Gene Name:	gelsolin
Database Link:	<a href="#">Entrez Gene 227753 Mouse</a> <a href="#">Entrez Gene 296654 Rat</a> <a href="#">Entrez Gene 2934 Human</a> <a href="#">P06396</a>



[View online »](#)

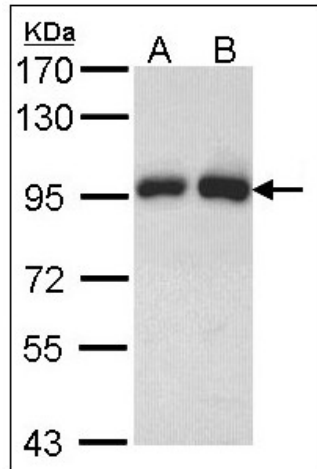
**Background:** Calcium-regulated, actin-modulating protein that binds to the plus (or barbed) ends of actin monomers or filaments, preventing monomer exchange (end-blocking or capping). It can promote the assembly of monomers into filaments (nucleation) as well as sever filaments already formed. Plays a role in ciliogenesis.

**Synonyms:** Brevin, AGEL, GSN

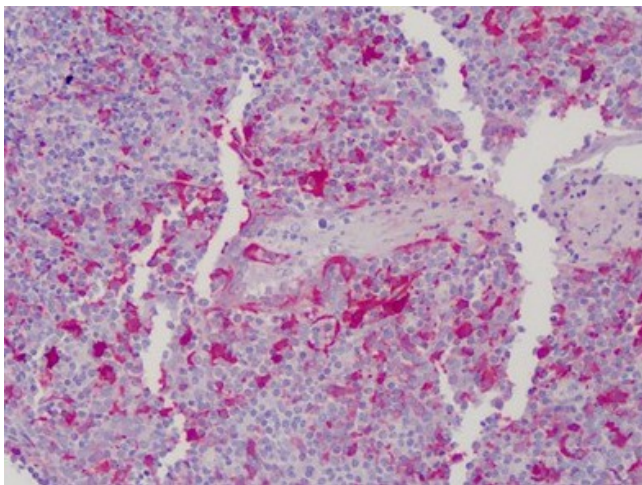
**Protein Families:** Druggable Genome, Secreted Protein

**Protein Pathways:** Fc gamma R-mediated phagocytosis, Regulation of actin cytoskeleton

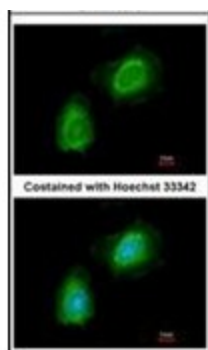
**Product images:**



Sample (30 ug of whole cell lysate). A: H1299. B: HeLa. 7.5% SDS PAGE. GSN antibody diluted at 1/1000.



Human Tonsil: Formalin-Fixed, Paraffin-Embedded (FFPE)



Immunofluorescence analysis of methanol-fixed HeLa, using Gelsolin antibody at 1/200 dilution.