

## Product datasheet for **AP23588PU-N**

### TPM1 (92-283) Rabbit Polyclonal Antibody

#### Product data:

Product Type:	Primary Antibodies
Applications:	IHC, WB
Recommended Dilution:	<b>Immunohistochemistry on Paraffin Sections:</b> 10 µg/ml. <b>Western Blot.</b>
Reactivity:	Bovine, Human, Mouse, Porcine, Rabbit, Rat
Host:	Rabbit
Clonality:	Polyclonal
Immunogen:	Recombinant protein fragment containing a sequence corresponding to a region within amino acids 92 - 283 of Human Tropomyosin 1
Specificity:	This antibody reacts to Tropomyosin Alpha Chain, Skeletal Muscle (TPM1) at aa 92-283.
Formulation:	0.1 M Tris-glycine, pH 7.0 containing 20% Glycerol as stabilizer and 0.01% Thimerosal as preservative State: Aff - Purified State: Liquid purified IgG fraction
Concentration:	lot specific
Purification:	Immunoaffinity Chromatography
Conjugation:	Unconjugated
Storage:	Store the antibody (in aliquots) at -20°C. Avoid repeated freezing and thawing.
Stability:	Shelf life: one year from despatch.
Gene Name:	tropomyosin 1 (alpha)
Database Link:	<a href="#">Entrez Gene 22003 Mouse</a> <a href="#">Entrez Gene 24851 Rat</a> <a href="#">Entrez Gene 7168 Human P09493</a>
Background:	TPM1 / Tropomyosin is a member of the tropomyosin family of highly conserved, widely distributed actin-binding proteins involved in the contractile system of striated and smooth muscles and the cytoskeleton of non-muscle cells. Tropomyosin is composed of two alpha-helical chains arranged as a coiled-coil. It is polymerized end to end along the two grooves of actin filaments and provides stability to the filaments.



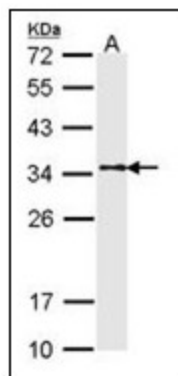
[View online »](#)

**Synonyms:** Tropomyosin alpha-1 chain, Alpha-tropomyosin, TMSA, C15orf13

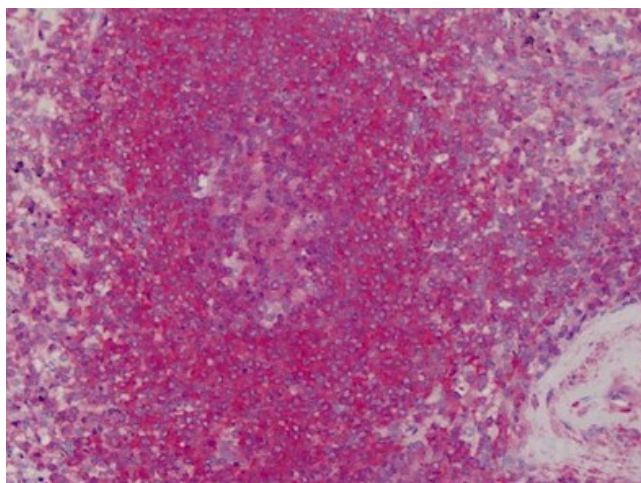
**Protein Families:** Druggable Genome

**Protein Pathways:** Cardiac muscle contraction, Dilated cardiomyopathy, Hypertrophic cardiomyopathy (HCM)

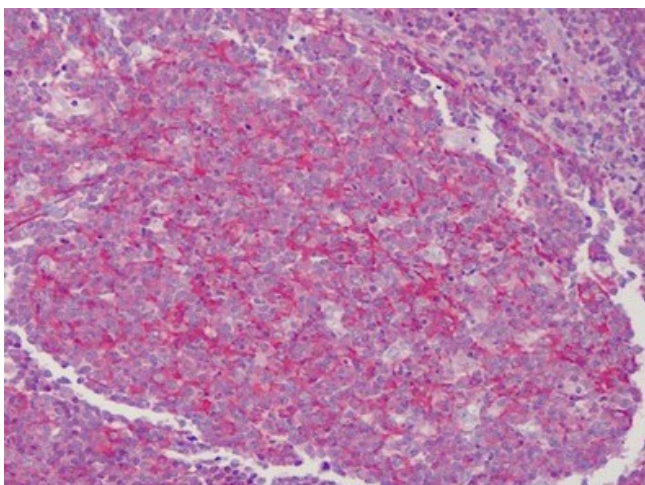
**Product images:**



Sample (30 ug of whole cell lysate). A: A431. 12% SDS PAGE. TPM1 antibody diluted at 1/1000.



Human Spleen: Formalin-Fixed, Paraffin-Embedded (FFPE)



Human Tonsil: Formalin-Fixed, Paraffin-Embedded (FFPE)