

Product datasheet for **AP23587PU-N**

MAD2 (MAD2L1) (1-174) Rabbit Polyclonal Antibody

Product data:

Product Type:	Primary Antibodies
Applications:	IHC, WB
Recommended Dilution:	Immunohistochemistry on Paraffin Sections: 10 µg/ml. Western Blot: 1/500 - 1/3000.
Reactivity:	Human, Mouse, Rat
Host:	Rabbit
Clonality:	Polyclonal
Immunogen:	Recombinant protein fragment containing a sequence corresponding to a region within amino acids 1 and 174 of Human MAD2
Specificity:	This antibody reacts to MAD2 Mitotic Arrest Deficient-like 1 (MAD2L1) at aa 1-174.
Formulation:	0.1 M Tris-glycine, pH 7.0 containing 20% Glycerol as stabilizer and 0.01% Thimerosal as preservative State: Aff - Purified State: Liquid purified Ig fraction
Concentration:	lot specific
Purification:	Immunoaffinity Chromatography
Conjugation:	Unconjugated
Storage:	Store the antibody at -20°C. Avoid repeated freezing and thawing.
Stability:	Shelf life: one year from despatch.
Gene Name:	MAD2 mitotic arrest deficient-like 1 (yeast)
Database Link:	Entrez Gene 56150 Mouse Entrez Gene 297176 Rat Entrez Gene 4085 Human Q13257
Background:	Component of the spindle-assembly checkpoint that prevents the onset of anaphase until all chromosomes are properly aligned at the metaphase plate. Required for the execution of the mitotic checkpoint which monitors the process of kinetochore-spindle attachment and inhibits the activity of the anaphase promoting complex by sequestering CDC20 until all chromosomes are aligned at the metaphase plate.



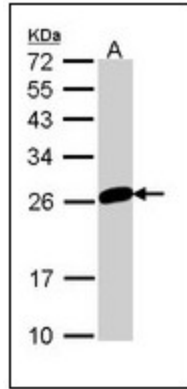
[View online »](#)

Synonyms: Mitotic spindle assembly checkpoint protein MAD2A, MAD2

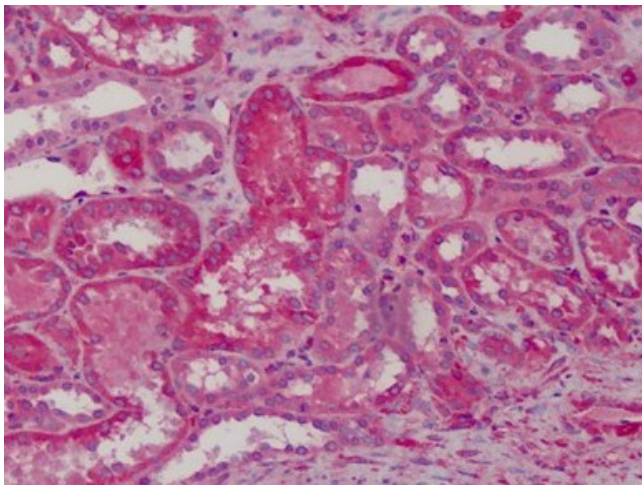
Protein Families: Druggable Genome

Protein Pathways: Cell cycle, Oocyte meiosis, Progesterone-mediated oocyte maturation

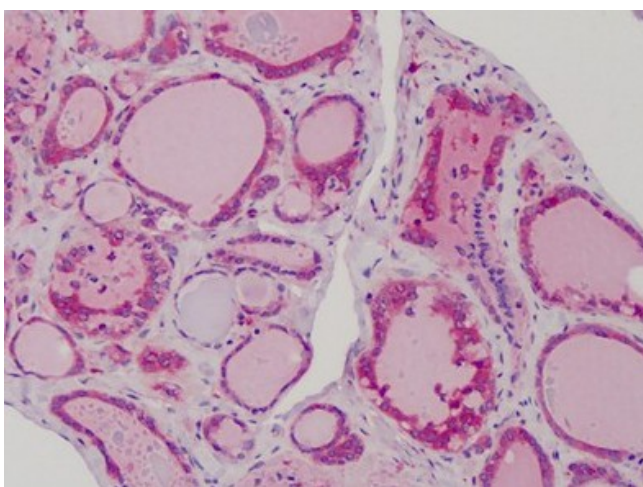
Product images:



Sample (30 ug of whole cell lysate). A: 293T. 12% SDS PAGE. MAD2L1 antibody diluted at 1/1000.



Human Kidney: Formalin-Fixed, Paraffin-Embedded (FFPE)



Human Thyroid: Formalin-Fixed, Paraffin-Embedded (FFPE)