

Product datasheet for **AP23586PU-N**

GSTM1 (1-159) Rabbit Polyclonal Antibody

Product data:

Product Type:	Primary Antibodies
Applications:	IHC, WB
Recommended Dilution:	Immunohistochemistry on Paraffin Sections: 10 µg/ml. Western Blot: 1/500 - 1/3000.
Reactivity:	Bovine, Human, Mouse, Porcine, Rat
Host:	Rabbit
Clonality:	Polyclonal
Immunogen:	Recombinant protein fragment containing a sequence corresponding to a region within amino acids 1 and 159 of Human GSTM1
Specificity:	This antibody reacts to Glutathione S-transferase M1 (GSTM1) at aa 1-159.
Formulation:	0.1 M Tris-glycine, pH 7.0 containing 20% Glycerol as stabilizer and 0.01% Thimerosal as preservative State: Aff - Purified State: Liquid purified Ig fraction
Concentration:	lot specific
Purification:	Immunoaffinity Chromatography
Conjugation:	Unconjugated
Storage:	Store the antibody at -20°C. Avoid repeated freezing and thawing.
Stability:	Shelf life: one year from despatch.
Gene Name:	glutathione S-transferase mu 1
Database Link:	Entrez Gene 14862 Mouse Entrez Gene 24423 Rat Entrez Gene 2944 Human P09488
Background:	An enzyme responsible for the metabolism of a broad range of toxic compounds. Mutations are correlated with increased risk of lung cancer after exposure to environmental tobacco smoke.
Synonyms:	Glutathione S-transferase Mu 1, GST class-mu 1, GSTM1-1, GST1, GSTM1a-1a, GSTM1b-1b, GTH4

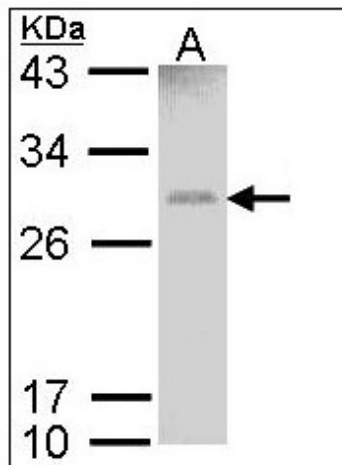


[View online »](#)

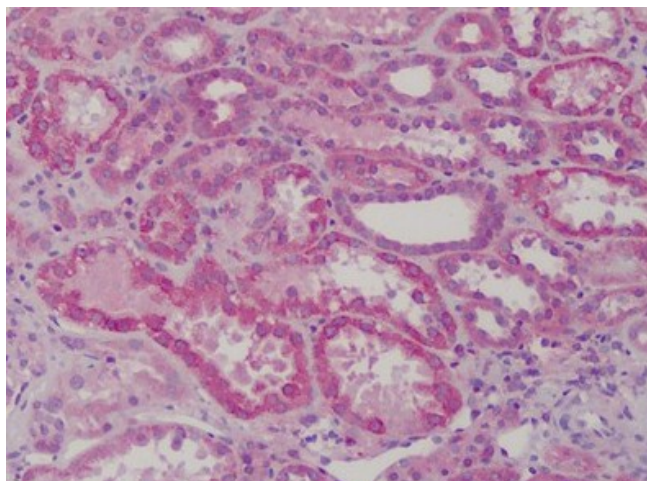
Protein Families: Druggable Genome

Protein Pathways: Drug metabolism - cytochrome P450, Glutathione metabolism, Metabolism of xenobiotics by cytochrome P450

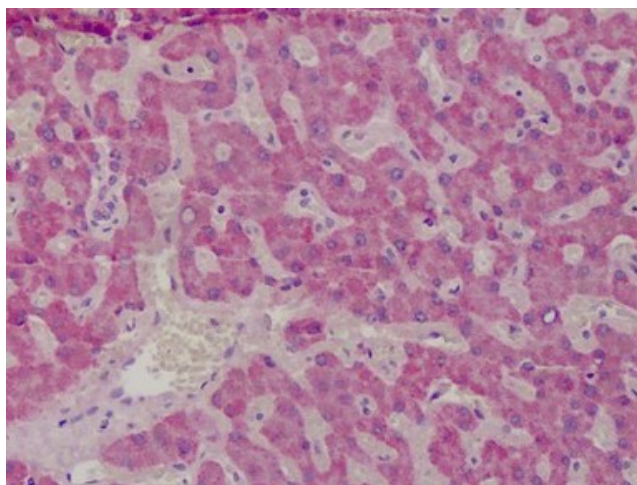
Product images:



Sample (30 ug of whole cell lysate). A: HeLa. 12% SDS PAGE. GSTM1 antibody diluted at 1/1000.



Human Kidney: Formalin-Fixed, Paraffin-Embedded (FFPE)



Human Liver: Formalin-Fixed, Paraffin-Embedded (FFPE)