

## Product datasheet for **AP23584PU-N**

### **CARD11 (18-238) Rabbit Polyclonal Antibody**

#### **Product data:**

Product Type:	Primary Antibodies
Applications:	IHC, WB
Recommended Dilution:	<b>Immunohistochemistry on Paraffin Sections:</b> 10 µg/ml. <b>Western Blot:</b> 1/500 - 1/3000.
Reactivity:	Bovine, Human, Mouse
Host:	Rabbit
Clonality:	Polyclonal
Immunogen:	Recombinant protein fragment containing a sequence corresponding to a region within amino acids 18 and 238 of Human CARD11
Specificity:	This antibody reacts to Caspase Recruitment Domain Family, Member 11 (CARD11).
Formulation:	0.1 M Tris-glycine, pH 7.0 containing 10% Glycerol as stabilizer and 0.01% Thimerosal as preservative State: Aff - Purified State: Liquid purified Ig fraction
Concentration:	lot specific
Purification:	Immunoaffinity Chromatography
Conjugation:	Unconjugated
Storage:	Store the antibody at -20°C. Avoid repeated freezing and thawing.
Stability:	Shelf life: one year from despatch.
Gene Name:	caspase recruitment domain family member 11
Database Link:	<a href="#">Entrez Gene 108723 Mouse</a> <a href="#">Entrez Gene 84433 Human</a> <a href="#">Q9BXL7</a>



[View online »](#)

**Background:**

CARMA proteins belong to the membrane-associated guanylate kinase-like (MAGUK) family of proteins that can function as molecular scaffolds that assist assembly of signal transduction molecules. CARMA1, CARMA2, and CARMA3 share high degrees of sequence and functional homology, but their tissue-specific distribution suggests that they serve distinct biological functions in different cell types. Both CARMA1 and CARMA3 associate with NEMO, the regulatory subunit of the I $\kappa$ B complex, thereby regulating activation of the NF- $\kappa$ B transcription factor. Also, gene inactivation studies showed a complete block in T and B cell immunity as well as an impaired response to LPS, indicating that CARMA1 is a critical regulator in both the adaptive and innate immune systems.

**Synonyms:**

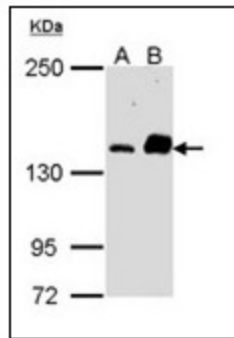
BIMP3; CARMA1; MGC133069

**Protein Families:**

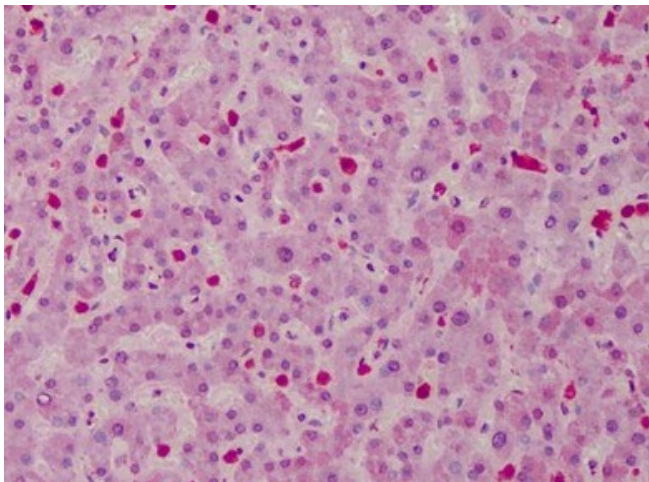
Druggable Genome

**Protein Pathways:**

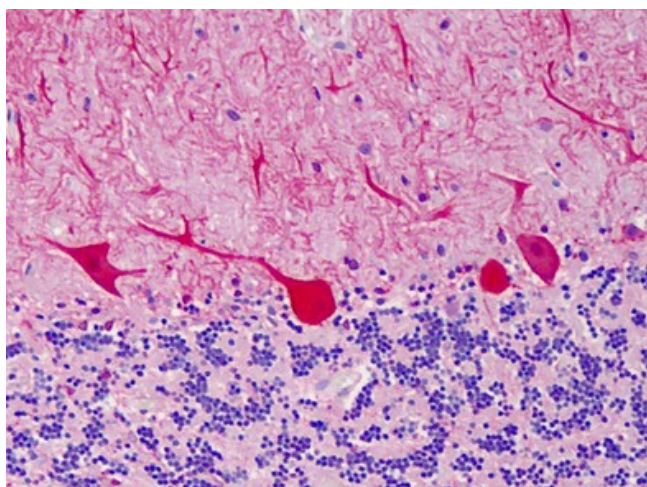
B cell receptor signaling pathway, T cell receptor signaling pathway

**Product images:**


Sample (30 ug of whole cell lysate). A: A431. B: Raji. 5% SDS PAGE. CARD11 antibody diluted at 1/1000.



Human Liver: Formalin-Fixed, Paraffin-Embedded (FFPE)



Human Cerebellum: Formalin-Fixed, Paraffin-Embedded (FFPE)