

Product datasheet for **AP23583PU-N**

14-3-3 beta (YWHAB) (34-221) Rabbit Polyclonal Antibody

Product data:

Product Type:	Primary Antibodies
Applications:	IF, IHC, WB
Recommended Dilution:	Immunocytochemistry. Immunofluorescence: 1/100 - 1/200. Immunohistochemistry on Paraffin Sections: 5 µg/ml. Western Blot: 1/5000 - 1/20000.
Reactivity:	Human, Mouse, Rat, Zebrafish
Host:	Rabbit
Clonality:	Polyclonal
Immunogen:	Recombinant protein fragment containing a sequence corresponding to a region within amino acids 34 and 221 of Human 14-3-3 beta
Specificity:	This antibody reacts to 14-3-3 beta at aa 34-221.
Formulation:	0.1 M Tris-glycine, pH 7.0 containing 10% Glycerol as stabilizer and 0.01% Thimerosal as preservative State: Aff - Purified State: Liquid purified Ig fraction
Concentration:	lot specific
Purification:	Immunoaffinity Chromatography
Conjugation:	Unconjugated
Storage:	Store the antibody at -20°C. Avoid repeated freezing and thawing.
Stability:	Shelf life: one year from despatch.
Gene Name:	tyrosine 3-monooxygenase/tryptophan 5-monooxygenase activation protein beta
Database Link:	<u>Entrez Gene 54401 Mouse</u> <u>Entrez Gene 56011 Rat</u> <u>Entrez Gene 7529 Human P31946</u>



[View online »](#)

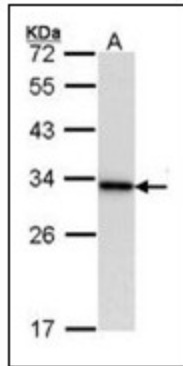
Background: Adapter protein implicated in the regulation of a large spectrum of both general and specialized signaling pathways. Binds to a large number of partners, usually by recognition of a phosphoserine or phosphothreonine motif. Binding generally results in the modulation of the activity of the binding partner. Negative regulator of osteogenesis.

Synonyms: YWHAB, KCIP-1, Protein 1054

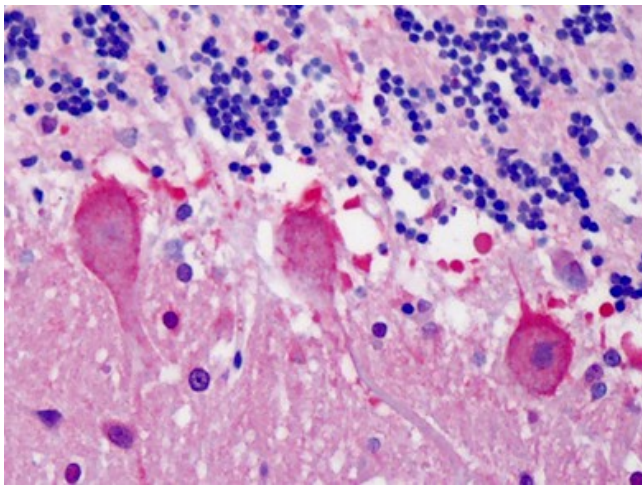
Protein Families: Druggable Genome

Protein Pathways: Cell cycle, Neurotrophin signaling pathway, Oocyte meiosis

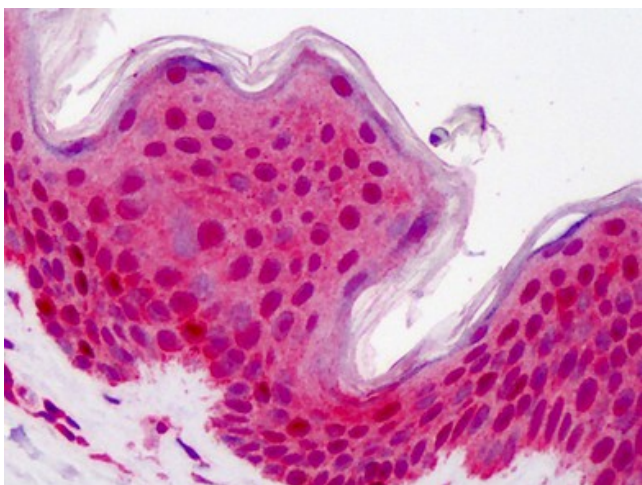
Product images:



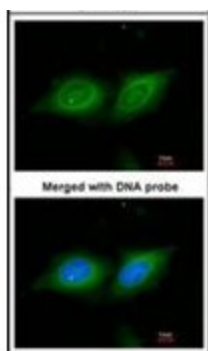
Sample (30 ug of whole cell lysate). A: Raji. 12% SDS PAGE. YWHAB antibody diluted at 1/10000.



Human Cerebellum: Formalin-Fixed, Paraffin-Embedded (FFPE)



Human Skin: Formalin-Fixed, Paraffin-Embedded (FFPE)



Immunofluorescence analysis of paraformaldehyde-fixed HeLa, using 14-3-3 beta antibody at 1/200 dilution.