

Product datasheet for **AP23582PU-N**

14-3-3 beta (YWHAB) (1-141) Rabbit Polyclonal Antibody

Product data:

Product Type:	Primary Antibodies
Applications:	IF, IHC, WB
Recommended Dilution:	Immunocytochemistry. Immunofluorescence: 1/100 - 1/200. Immunohistochemistry on Paraffin Sections: 5 µg/ml. Western Blot: 1/5000 - 1/20000.
Reactivity:	Human, Mouse, Porcine, Rat, Zebrafish
Host:	Rabbit
Clonality:	Polyclonal
Immunogen:	Recombinant protein fragment containing a sequence corresponding to a region within amino acids 1 and 141 of 14-3-3 beta
Specificity:	This antibody detects 14-3-3 beta at 1-141.
Formulation:	0.1M Tris-glycine, pH 7, 10% Glycerol, 0.01% Thimerosal State: Aff - Purified State: Liquid purified Ig fraction
Concentration:	lot specific
Purification:	Immunoaffinity Chromatography
Conjugation:	Unconjugated
Storage:	Store the antibody (in aliquots) at -20°C. Avoid repeated freezing and thawing.
Stability:	Shelf life: one year from despatch.
Gene Name:	tyrosine 3-monooxygenase/tryptophan 5-monooxygenase activation protein beta
Database Link:	Entrez Gene 54401 Mouse Entrez Gene 56011 Rat Entrez Gene 7529 Human P31946



[View online »](#)

Background:

This gene encodes a protein belonging to the 14-3-3 family of proteins, members of which mediate signal transduction by binding to phosphoserine-containing proteins. This highly conserved protein family is found in both plants and mammals. The encoded protein has been shown to interact with RAF1 and CDC25 phosphatases, suggesting that it may play a role in linking mitogenic signaling and the cell cycle machinery. Two transcript variants, which encode the same protein, have been identified for this gene.

Synonyms:

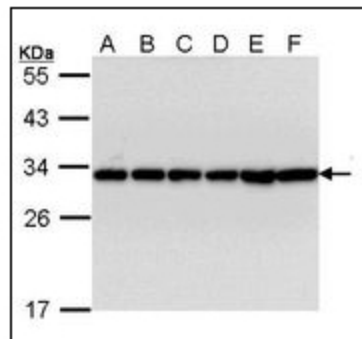
YWHAB, KCIP-1, Protein 1054

Protein Families:

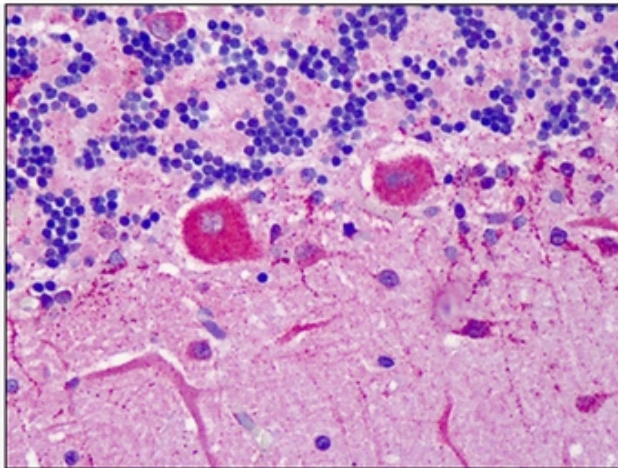
Druggable Genome

Protein Pathways:

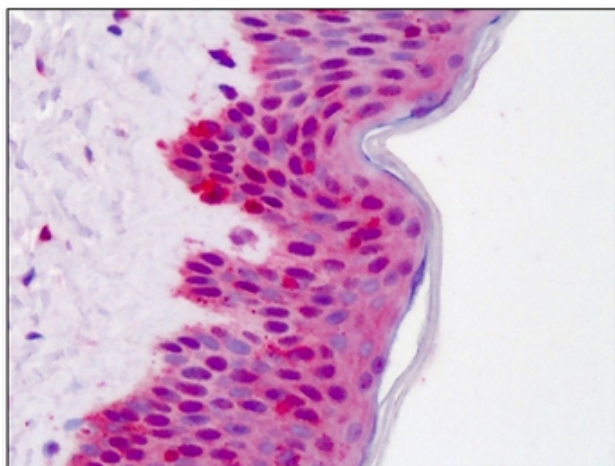
Cell cycle, Neurotrophin signaling pathway, Oocyte meiosis

Product images:


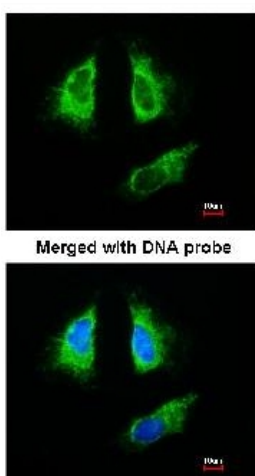
Sample (30 ug of whole cell lysate). Lane A: A431. Lane B: H1299. Lane C: HeLa. Lane D: Hep G2. Lane E: Molt-4. Lane F: Raji. 12% SDS PAGE. YWHAB antibody diluted at 1:10000.



Human Cerebellum: Formalin-Fixed, Paraffin-Embedded (FFPE)



Human Skin: Formalin-Fixed, Paraffin-Embedded (FFPE)



Immunofluorescence analysis of paraformaldehyde-fixed HeLa, using 14-3-3 beta antibody at 1/200 dilution.