

Product datasheet for **AP23580PU-N**

Arginase 1 (ARG1) (1-145) Rabbit Polyclonal Antibody

Product data:

Product Type:	Primary Antibodies
Applications:	IHC, WB
Recommended Dilution:	Immunohistochemistry on Paraffin Sections: 5 µg/ml. Western Blot: 1/500 - 1/3000.
Reactivity:	Bovine, Human, Mouse, Porcine, Rabbit, Rat
Host:	Rabbit
Clonality:	Polyclonal
Immunogen:	Recombinant protein fragment containing a sequence corresponding to a region within amino acids 1 and 145 of Human Arginase-1
Specificity:	This antibody recognizes Arginase I at aa 1-145.
Formulation:	0.1 M Tris-glycine, pH 7, 10% Glycerol, 0.01% Thimerosal State: Aff - Purified State: Liquid purified Ig fraction
Concentration:	lot specific
Purification:	Immunoaffinity Chromatography
Conjugation:	Unconjugated
Storage:	Store the antibody (in aliquots) at -20°C. Avoid repeated freezing and thawing.
Stability:	Shelf life: one year from despatch.
Gene Name:	arginase 1
Database Link:	Entrez Gene 11846 Mouse Entrez Gene 29221 Rat Entrez Gene 383 Human P05089
Background:	Arginase-1 (ARG1) catalyzes the hydrolysis of L-arginine into ornithine and urea, a critical step for the urea cycle. Defects in ARG1 are the cause of argininemia, an autosomal recessive disorder characterized by hyperammonemia. There are several isoforms of mammalian arginase. The type I isoform, is a cytosolic enzyme and expressed predominantly in the liver as a component of the urea cycle. Hepatocellular carcinoma usually shows higher protein expression of ARG1 than normal liver cells.



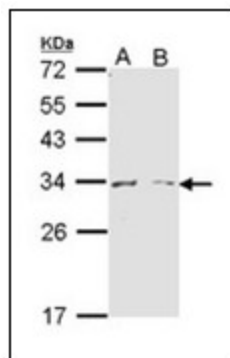
[View online »](#)

Synonyms: Type I arginase, Liver-type arginase, ARG1

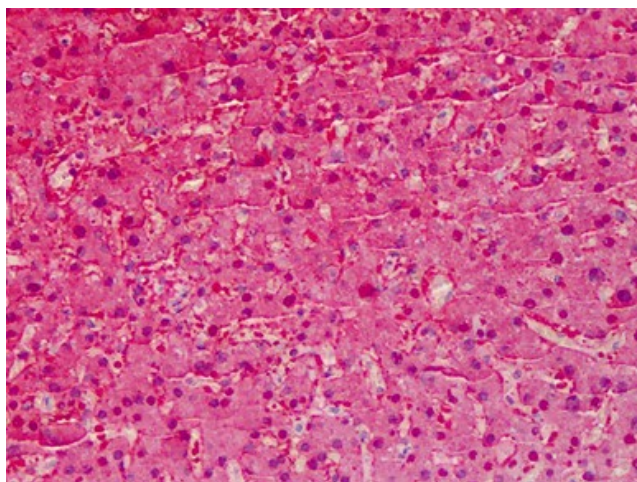
Protein Families: Druggable Genome

Protein Pathways: Arginine and proline metabolism, Metabolic pathways

Product images:



Western Blot analysis using ARG1 antibody at 1/1000 dilution. Sample (30 ug of whole cell lysate). Lane A: Molt-4. Lane B: Raji. 12% SDS PAGE.



Human Liver: Formalin-Fixed, Paraffin-Embedded (FFPE)