

Product datasheet for **AP23579PU-N**

FANCC (C-term) Rabbit Polyclonal Antibody

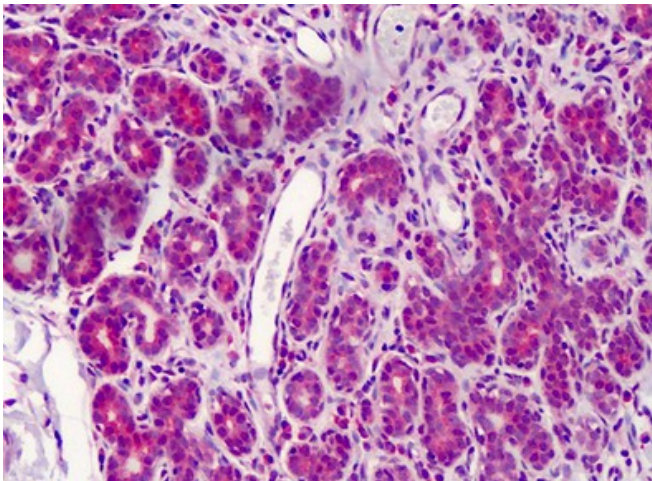
Product data:

Product Type:	Primary Antibodies
Applications:	IHC, WB
Recommended Dilution:	Immunohistochemistry on Paraffin Sections: 10 µg/ml. Western Blot.
Reactivity:	Human
Host:	Rabbit
Isotype:	IgG
Clonality:	Polyclonal
Immunogen:	Synthetic peptide - KLH conjugated
Specificity:	A synthetic peptide corresponding to the C-terminal 15 amino acids, conjugated to a carrier protein.
Formulation:	PBS, pH 7.2 without preservatives. State: Liquid purified Ig fraction
Concentration:	lot specific
Purification:	Affinity Chromatography
Conjugation:	Unconjugated
Storage:	Store the antibody undiluted at 2-8°C for one month or (in aliquots) at -20°C for longer. Avoid repeated freezing and thawing.
Stability:	Shelf life: one year from despatch.
Gene Name:	Fanconi anemia complementation group C
Database Link:	Entrez Gene 2176 Human Q00597
Background:	The function of FANCC is unknown but defects in this gene have been associated with Fanconi anemia.
Synonyms:	Fanconi anemia group C protein, FAC, FACC
Protein Families:	Druggable Genome

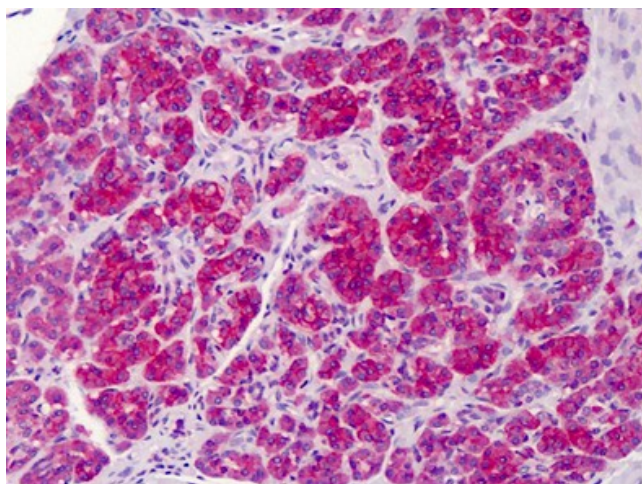


[View online »](#)

Product images:



Human Breast: Formalin-Fixed, Paraffin-Embedded (FFPE)



Human Pancreas: Formalin-Fixed, Paraffin-Embedded (FFPE)