

## Product datasheet for **AP23576PU-N**

### alpha Tubulin (TUBA4A) (426-450) Rabbit Polyclonal Antibody

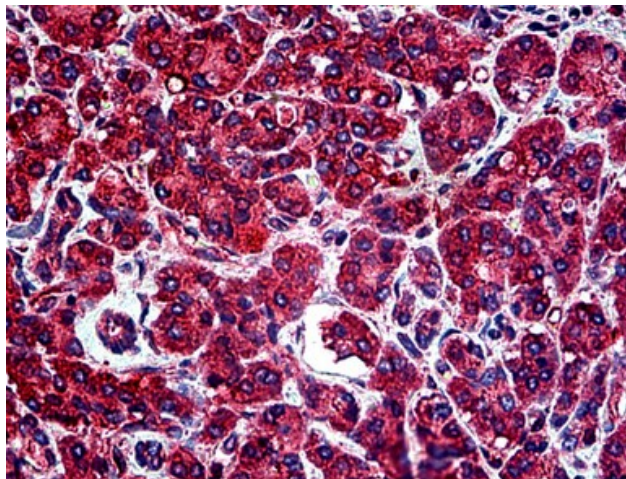
#### Product data:

Product Type:	Primary Antibodies
Applications:	IHC
Recommended Dilution:	<b>Immunohistochemistry on Paraffin Sections:</b> 1/100.
Reactivity:	Bovine, Chicken, Frog, Guinea Pig, Gerbil, Human, Mouse, Porcine, Rat
Host:	Rabbit
Clonality:	Polyclonal
Immunogen:	A synthetic peptide from aa 426-450 of human tubulin alpha
Specificity:	This antibody reacts to Tubulin, Alpha 1 (TUBA1).
Formulation:	10 mM PBS, pH 7.4 containing BSA as stabilizer and 0.09% sodium azide as preservative State: Liquid purified IgG fraction
Purification:	Immunoaffinity Chromatography
Conjugation:	Unconjugated
Storage:	Store the antibody undiluted at 2-8°C for one month or (in aliquots) at -20°C for longer. Avoid repeated freezing and thawing.
Stability:	Shelf life: one year from despatch.
Gene Name:	tubulin alpha 4a
Database Link:	<a href="#">Entrez Gene 22145 Mouse</a> <a href="#">Entrez Gene 316531 Rat</a> <a href="#">Entrez Gene 7277 Human</a> <a href="#">P68366</a>
Synonyms:	Tubulin alpha-4A chain, Tubulin alpha-1 chain, Alpha-tubulin 1, Tubulin H2-alpha
Protein Families:	Druggable Genome
Protein Pathways:	Gap junction, Pathogenic Escherichia coli infection

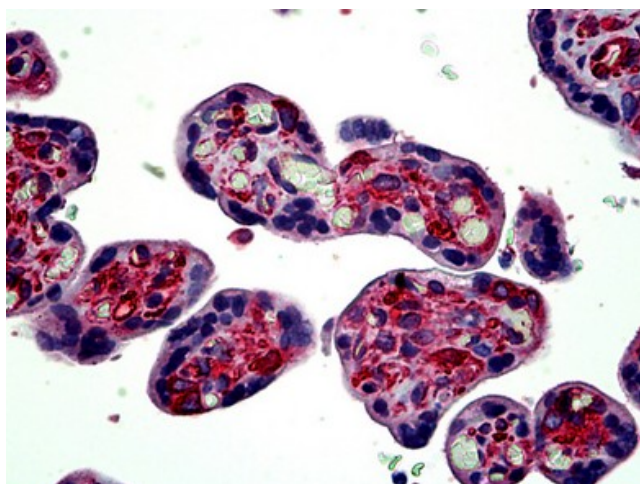


[View online »](#)

**Product images:**



Human Pancreas: Formalin-Fixed, Paraffin-Embedded (FFPE)



Human Placenta: Formalin-Fixed, Paraffin-Embedded (FFPE)