

## Product datasheet for **AP23573PU-N**

### LASP1 (141-153) Goat Polyclonal Antibody

#### Product data:

Product Type:	Primary Antibodies
Applications:	ELISA, IHC, WB
Recommended Dilution:	<b>ELISA:</b> 1/32000. <b>Immunohistochemistry on Paraffin Sections:</b> 2.5 - 5 µg/ml. <b>Western Blot:</b> 1/32000, 0.03 - 0.1 µg/ml.
Reactivity:	Canine, Human
Host:	Goat
Clonality:	Polyclonal
Immunogen:	Synthetic peptide from an internal region of human LASP1 (aa141-153)
Specificity:	This antibody reacts to the internal region of Lim And Sh3 Domain Protein Lasp-1 (LASP1) at aa 141-153.
Formulation:	Tris saline buffer, pH 7.3 containing 0.5% BSA as stabilizer and 0.02% sodium azide as preservative State: Aff - Purified State: Liquid purified Ig fraction
Concentration:	lot specific
Purification:	Immunoaffinity Chromatography
Conjugation:	Unconjugated
Storage:	Store the antibody at -20°C. Avoid repeated freezing and thawing.
Stability:	Shelf life: one year from despatch.
Gene Name:	LIM and SH3 protein 1
Database Link:	<a href="#">Entrez Gene 3927 Human Q14847</a>
Background:	Plays an important role in the regulation of dynamic actin-based, cytoskeletal activities. Agonist-dependent changes in LASP1 phosphorylation may also serve to regulate actin-associated ion transport activities, not only in the parietal cell but also in certain other F-actin-rich secretory epithelial cell types.

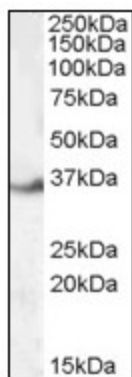


[View online »](#)

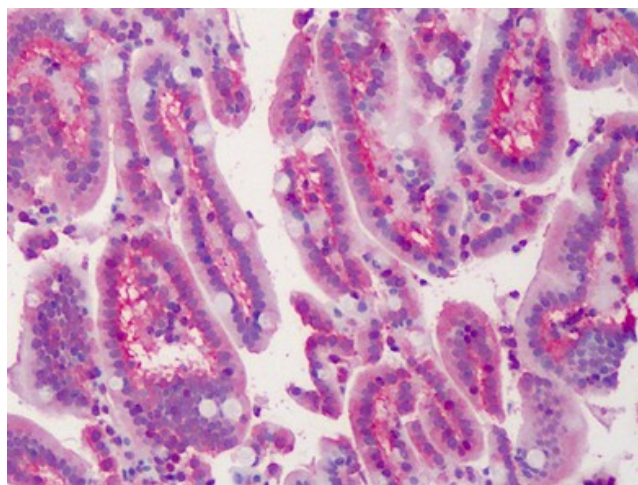
Synonyms: LASP-1, MLN50

Protein Families: Druggable Genome

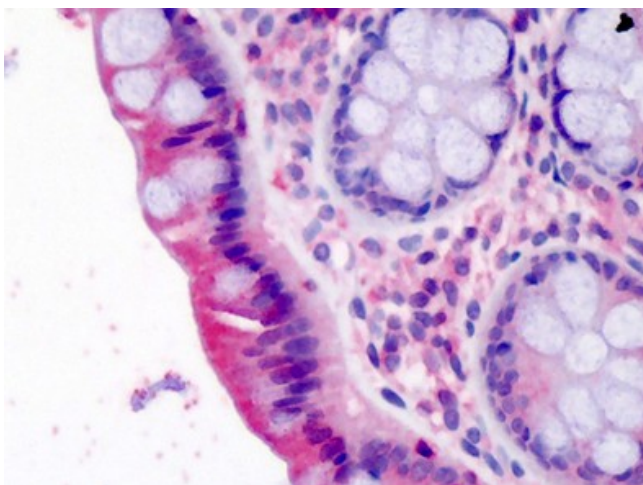
### Product images:



Antibody (0.1 ug/ml) staining of Human Kidney lysate (35 ug protein in RIPA buffer). Primary incubation was 1 hour. Detected by chemiluminescence.



Human Small Intestine: Formalin-Fixed, Paraffin-Embedded (FFPE)



Human Colon: Formalin-Fixed, Paraffin-Embedded (FFPE)