

Product datasheet for **AP23572PU-N**

PARK7 (167-189) Rabbit Polyclonal Antibody

Product data:

Product Type:	Primary Antibodies
Applications:	ELISA, IHC, WB
Recommended Dilution:	ELISA. Immunohistochemistry on Paraffin Sections: 10 µg/ml. Western Blot: 1/500 - 1/1000.
Reactivity:	Human, Mouse
Host:	Rabbit
Isotype:	IgG
Clonality:	Polyclonal
Immunogen:	Synthetic peptide from human PARK7 / DJ-1 (aa 167-189)
Specificity:	This antibody detects residues 167-189 (AIVEALNGKEVAAQVKAPLVLKD) of human PARK7 (DJ-1).
Formulation:	PBS containing 0.02% sodium azide as preservative State: Aff - Purified State: Liquid purified Ig fraction
Concentration:	lot specific
Purification:	Immunoaffinity Chromatography
Conjugation:	Unconjugated
Storage:	Store the antibody undiluted at 2-8°C for one month or (in aliquots) at -20°C for longer. Avoid repeated freezing and thawing.
Stability:	Shelf life: one year from despatch.
Gene Name:	Parkinsonism associated deglycase
Database Link:	<u>Entrez Gene 57320 Mouse</u> <u>Entrez Gene 11315 Human</u> <u>Q99497</u>



[View online »](#)

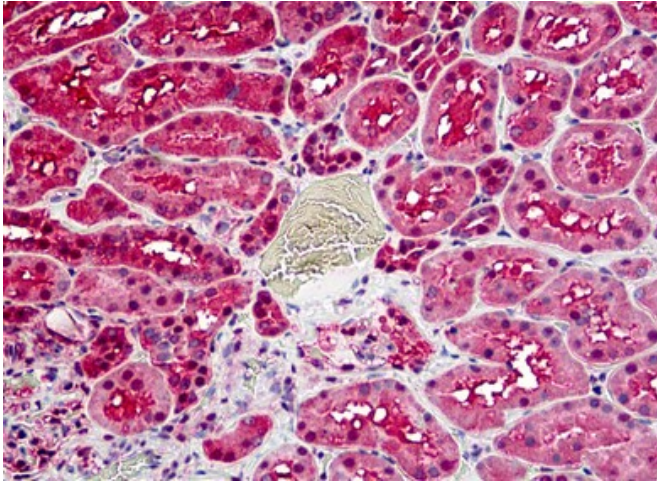
Background: Protects cells against oxidative stress and cell death. Plays a role in regulating expression or stability of the mitochondrial uncoupling proteins SLC25A14 and SLC25A27 in dopaminergic neurons of the substantia nigra pars compacta and attenuates the oxidative stress induced by calcium entry into the neurons via L-type channels during pacemaking. Eliminates hydrogen peroxide and protects cells against hydrogen peroxide-induced cell death.

Synonyms: Oncogene DJ1, Parkinson disease protein 7

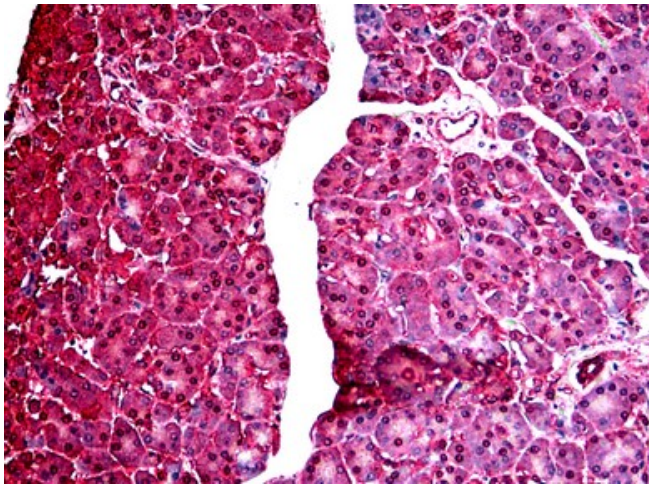
Protein Families: Druggable Genome, Protease

Protein Pathways: Parkinson's disease

Product images:



Human Kidney: Formalin-Fixed, Paraffin-Embedded (FFPE)



Human Pancreas: Formalin-Fixed, Paraffin-Embedded (FFPE)