

Product datasheet for **AP23571PU-N**

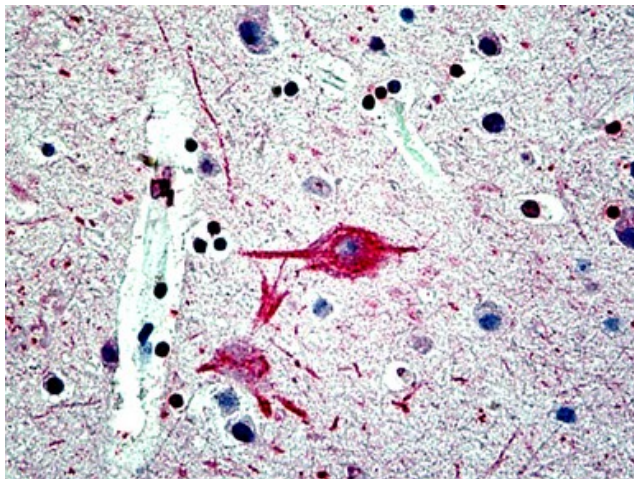
FBXW7 (N-term) Rabbit Polyclonal Antibody

Product data:

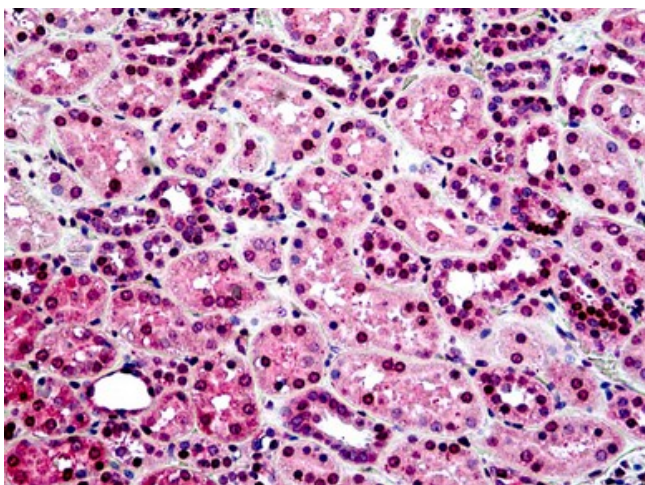
Product Type:	Primary Antibodies
Applications:	ELISA, IHC, WB
Recommended Dilution:	ELISA. Immunohistochemistry on Paraffin Sections: 10 µg/ml. Western Blot: 1/500 - 1/1000.
Reactivity:	Human
Host:	Rabbit
Isotype:	IgG
Clonality:	Polyclonal
Immunogen:	Synthetic peptide - KLH conjugated
Specificity:	This antibody reacts to the N terminus of the 69 kD isoform of the hCdc4 protein.
Formulation:	PBS containing 0.02% sodium azide as preservative State: Liquid purified IgG fraction
Concentration:	lot specific
Purification:	Immunoaffinity Chromatography
Conjugation:	Unconjugated
Storage:	Store the antibody undiluted at 2-8°C for one month or (in aliquots) at -20°C for longer. Avoid repeated freezing and thawing.
Stability:	Shelf life: one year from despatch.
Gene Name:	F-box and WD repeat domain containing 7
Database Link:	Entrez Gene 55294 Human Q969H0
Synonyms:	FBW7, FBX30, SEL10, Archipelago homolog, hAgo, SEL-10, hCDC4
Protein Families:	Druggable Genome, Transmembrane
Protein Pathways:	Ubiquitin mediated proteolysis



[View online »](#)

Product images:

Human: Brain Formalin-Fixed, Paraffin-Embedded (FFPE)



Human Kidney: Formalin-Fixed, Paraffin-Embedded (FFPE)