

## Product datasheet for **AP23570PU-N**

### SLFN12 (C-term) Rabbit Polyclonal Antibody

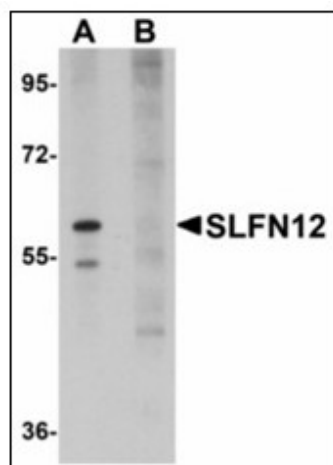
#### Product data:

Product Type:	Primary Antibodies
Applications:	ELISA, IHC, WB
Recommended Dilution:	<b>ELISA.</b> <b>Immunohistochemistry on Paraffin Sections:</b> 2.5 - 5 µg/ml. <b>Western Blot:</b> 1 - 2 µg/ml.
Reactivity:	Human
Host:	Rabbit
Clonality:	Polyclonal
Immunogen:	Peptide near the carboxy terminus of Human SLFN12. <b>Epitope:</b> C-Terminus.
Specificity:	This antibody reacts to the C-term of Schlafen Family Member 12 (SLFN12).
Formulation:	PBS State: Liquid purified IgG fraction Preservative: 0.02% Sodium Azide
Concentration:	lot specific
Purification:	Immunoaffinity Chromatography
Conjugation:	Unconjugated
Storage:	Store undiluted at 2-8°C for one month or (in aliquots) at -20°C for longer. Avoid repeated freezing and thawing.
Stability:	Shelf life: one year from despatch.
Gene Name:	schlafen family member 12
Database Link:	<a href="#">Entrez Gene 55106 Human</a> <a href="#">Q8IYM2</a>
Synonyms:	Schlafen 12, Schlafen12

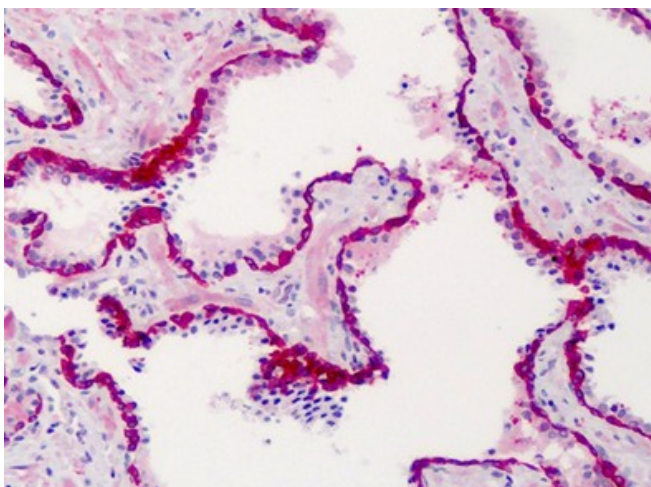


[View online »](#)

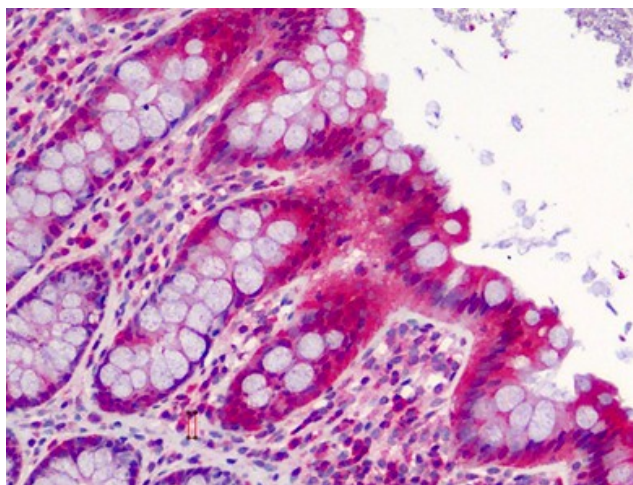
## Product images:



Western blot analysis of SLFN12 in SK-N-SH cell lysate with SLFN12 antibody at 1 ug/ml in (A) the absence and (B) the presence of blocking peptide.



Human Prostate: Formalin-Fixed, Paraffin-Embedded (FFPE)



Human Colon: Formalin-Fixed, Paraffin-Embedded (FFPE)