

## Product datasheet for **AP23569PU-N**

### Kallikrein 13 (KLK13) (262-277) Rabbit Polyclonal Antibody

#### Product data:

Product Type:	Primary Antibodies
Applications:	ELISA, IHC, WB
Recommended Dilution:	<b>ELISA.</b> <b>Immunohistochemistry on Paraffin Sections:</b> 5 µg/ml. <b>Western Blot:</b> 1/500 - 1/1000.
Reactivity:	Human
Host:	Rabbit
Isotype:	IgG
Clonality:	Polyclonal
Immunogen:	Synthetic peptide from human KLK13 / Kallikrein 13 (aa 262-277)
Specificity:	This antibody reacts to Kallikrein 13 (KLK13) at aa 262-277.
Formulation:	PBS containing 0.02% sodium azide as preservative State: Aff - Purified State: Liquid purified Ig fraction
Concentration:	lot specific
Purification:	Immunoaffinity Chromatography
Conjugation:	Unconjugated
Storage:	Store the antibody undiluted at 2-8°C for one month or (in aliquots) at -20°C for longer. Avoid repeated freezing and thawing.
Stability:	Shelf life: one year from despatch.
Gene Name:	kallikrein related peptidase 13
Database Link:	<a href="#">Entrez Gene 26085 Human Q9UKR3</a>
Background:	Kallikreins are a subgroup of serine proteases having diverse physiological functions. Growing evidence suggests that many kallikreins are implicated in carcinogenesis and some have potential as novel cancer and other disease biomarkers. This gene is one of the fifteen kallikrein subfamily members located in a cluster on chromosome 19. Expression of this gene is regulated by steroid hormones and may be useful as a marker for breast cancer.

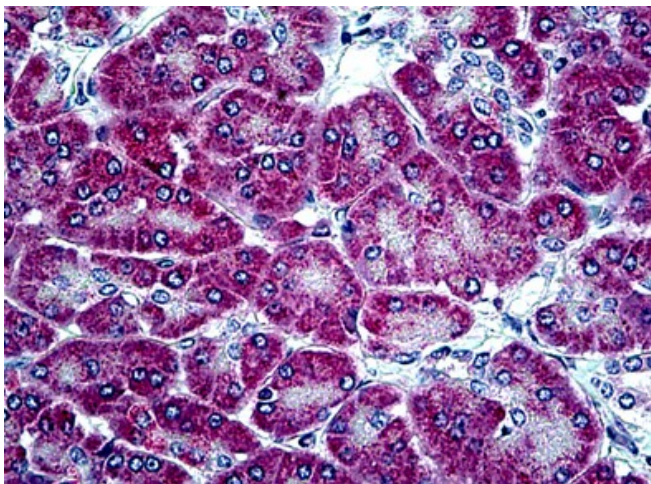


[View online »](#)

**Synonyms:** KLKL4, KLK-L4, Kallikrein-like protein 4

**Protein Families:** Druggable Genome, Secreted Protein

**Product images:**



Human Pancreas: Formalin-Fixed, Paraffin-Embedded (FFPE)