

Product datasheet for **AP23568PU-N**

GPR44 (PTGDR2) (329-348) Rabbit Polyclonal Antibody

Product data:

Product Type:	Primary Antibodies
Applications:	ELISA, IHC, WB
Recommended Dilution:	ELISA. Immunohistochemistry on Paraffin Sections: 10 µg/ml. Western Blot: 1/500 - 1/1000.
Reactivity:	Human, Mouse, Rat
Host:	Rabbit
Isotype:	IgG
Clonality:	Polyclonal
Immunogen:	Synthetic peptide from human GPR44 / CRTH2 (aa 329-348)
Specificity:	This antibody reacts to G Protein-Coupled Receptor GPR44 (CRTH2) at aa 329-348.
Formulation:	PBS containing 0.02% sodium azide as preservative State: Aff - Purified State: Liquid purified Ig fraction
Concentration:	lot specific
Purification:	Immunoaffinity Chromatography
Conjugation:	Unconjugated
Storage:	Store the antibody undiluted at 2-8°C for one month or (in aliquots) at -20°C for longer. Avoid repeated freezing and thawing.
Stability:	Shelf life: one year from despatch.
Gene Name:	prostaglandin D2 receptor 2
Database Link:	<u>Entrez Gene 14764 Mouse</u> <u>Entrez Gene 309212 Rat</u> <u>Entrez Gene 11251 Human Q9Y5Y4</u>



[View online »](#)

Background:

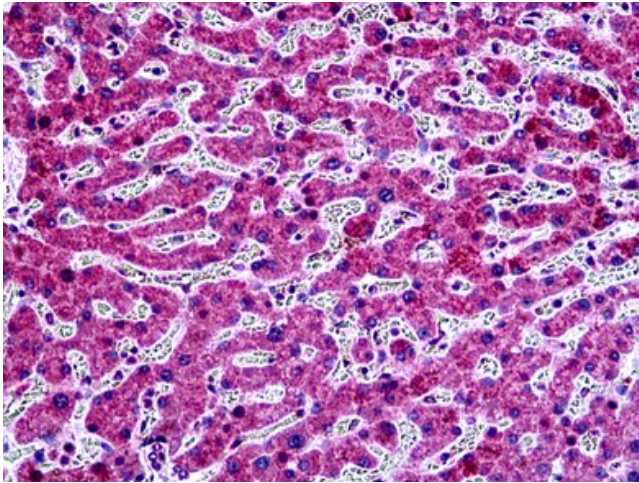
GPR44, also called CRTH2, is a Prostanoid Receptor that binds prostaglandin D2. PGD2 signals through CRTH2 to induce Th2, eosinophil, and basophil chemotaxis in a G-alpha(i) dependent manner. CRTH2 may play a role in mast cell-mediated immune responses such as those involved in allergic reactions. This receptor is upregulated in activated T helper-2 (Th2) cells, peripheral blood basophils, and eosinophils, but not in Th1 lineage cells. It may be a useful marker for Th2 and Tc2 cells.

Synonyms:

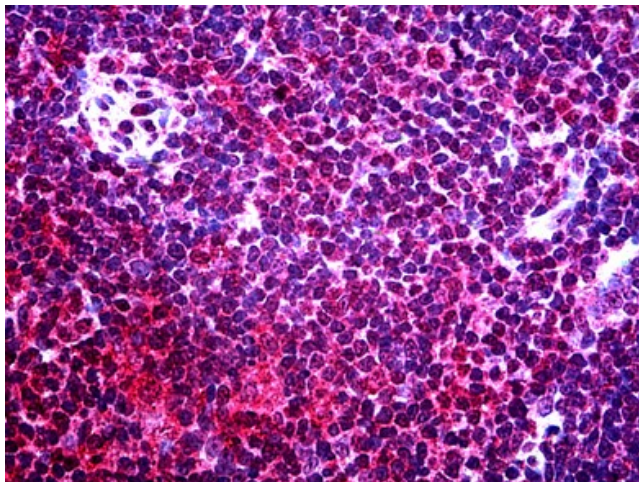
CRTH2, DL1R, PTGDR2, Prostaglandin D2 receptor 2

Protein Families:

Druggable Genome, GPCR, Transmembrane

Product images:

Human Liver: Formalin-Fixed, Paraffin-Embedded (FFPE)



Human Thymus: Formalin-Fixed, Paraffin-Embedded (FFPE)