

Product datasheet for **AP23567PU-N**

Sumo 2 (SUMO2) (C-term) Rabbit Polyclonal Antibody

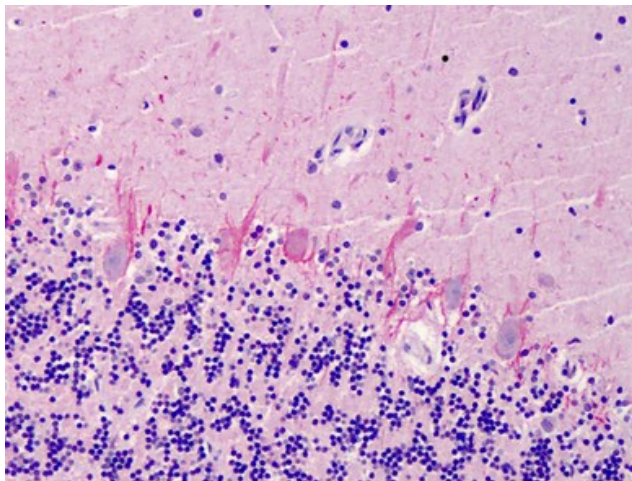
Product data:

Product Type:	Primary Antibodies
Applications:	IHC, WB
Recommended Dilution:	Immunohistochemistry on Paraffin Sections: 5 µg/ml. Western Blot: 1/1000.
Reactivity:	Human, Mouse
Host:	Rabbit
Clonality:	Polyclonal
Immunogen:	KLH conjugated synthetic peptide selected within C-terminal region of human SUMO2/3.
Specificity:	This antibody reacts to the C-term of Sentrin 2/3 (SUMO 2/3).
Formulation:	PBS containing 0.09% sodium azide as preservative State: Liquid purified Ig fraction
Purification:	Protein G Chromatography
Conjugation:	Unconjugated
Storage:	Store the antibody undiluted at 2-8°C for one month or (in aliquots) at -20°C for longer. Avoid repeated freezing and thawing.
Stability:	Shelf life: one year from despatch.
Gene Name:	small ubiquitin-like modifier 2
Database Link:	Entrez Gene 170930 Mouse Entrez Gene 6613 Human P61956
Synonyms:	SUMO-2, SMT3B, SMT3H2, HSMT3, Sentrin-2
Protein Families:	Druggable Genome

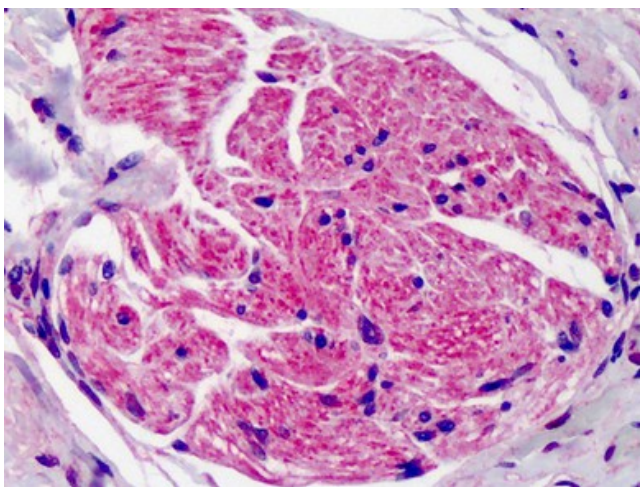


[View online »](#)

Product images:



Human Cerebellum: Formalin-Fixed, Paraffin-Embedded (FFPE)



Human Adrenal: Formalin-Fixed, Paraffin-Embedded (FFPE)