

## Product datasheet for **AP23552PU-N**

### Nephrin (NPHS1) (C-term) Rabbit Polyclonal Antibody

#### Product data:

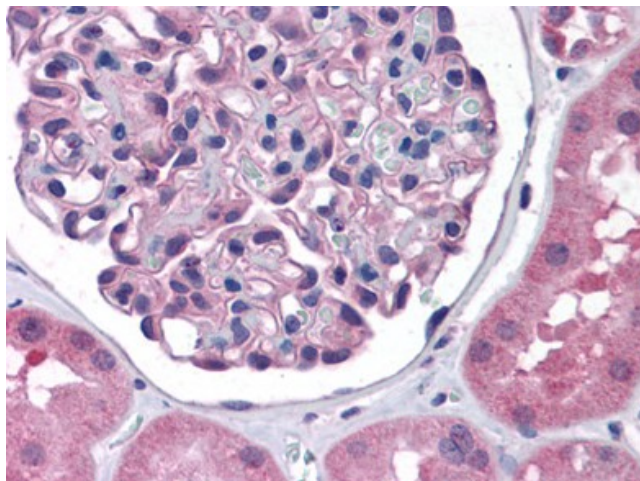
|                       |   |
|-----------------------|---|
| Product Type:         | Primary Antibodies  |
| Applications:         | IHC   |
| Recommended Dilution: | <b>Immunohistochemistry on Paraffin Sections:</b> 5 µg/ml.  |
| Reactivity:           | Human   |
| Host:                 | Rabbit  |
| Clonality:            | Polyclonal  |
| Immunogen:            | Epitope: C-Terminus   |
| Specificity:          | This antibody recognizes Nephrin.   |
| Formulation:          | PBS containing 0.02% Sodium Azide as preservative<br>State: Liquid purified Ig fraction   |
| Concentration:        | lot specific  |
| Purification:         | Immunoaffinity Chromatography   |
| Conjugation:          | Unconjugated  |
| Storage:              | Store undiluted at 2-8°C for one month or (in aliquots) at -20°C for longer.<br>Avoid repeated freezing and thawing.  |
| Stability:            | Shelf life: one year from despatch.   |
| Gene Name:            | NPHS1 nephrin   |
| Database Link:        | <a href="#">Entrez Gene 4868 Human O60500</a>   |
| Background:           | Nephrin Antibody: Nephrin is strongly expressed in renal glomeruli and is a member of the immunoglobulin family of cell adhesion molecules. Mutations in the Nephrin gene result in congenital nephrotic syndrome, an autosomal-recessive disorder characterized by massive proteinuria in utero and nephrosis at birth. Renal glomeruli allow normal kidneys to filter plasma so that it is very pure. Nephrin is expressed in the podocyte slit-diaphragm of the renal glomeruli in a manner that suggests that Nephrin molecules homodimerize in an anti-parallel fashion similar to cadherin interactions in adherens junctions. Thus, Nephrin may constitute the entire extracellular structure of the slit-diaphragm. |
| Synonyms:             | NPHS1, NPHN   |



[View online »](#)

Protein Families: Druggable Genome, Transmembrane

**Product images:**



Formalin-Fixed, Paraffin-Embedded Human Kidney stained with Nephrin antibody at 5 ug/ml after heat-induced antigen retrieval.