

Product datasheet for **AP23530PU-N**

RIP (RIPK1) (C-term) Rabbit Polyclonal Antibody

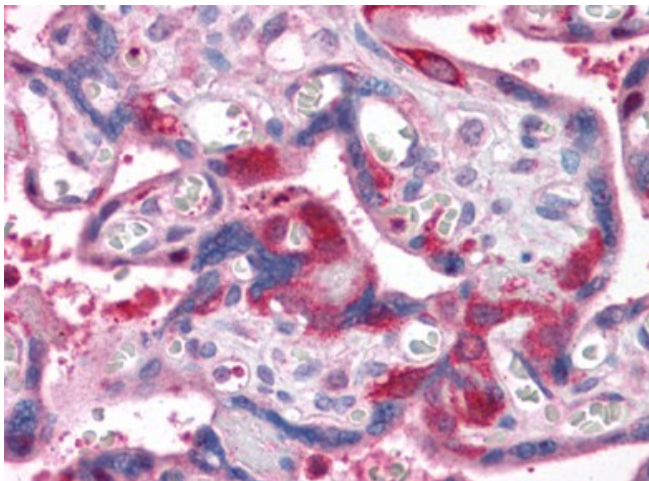
Product data:

Product Type:	Primary Antibodies
Applications:	IHC
Recommended Dilution:	Immunohistochemistry on Paraffin Sections: 5 µg/ml.
Reactivity:	Human
Host:	Rabbit
Clonality:	Polyclonal
Specificity:	This antibody reacts to C-term of Receptor-interacting Serine/Threonine Kinase 1 (RIPK1).
Formulation:	PBS containing 0.02% sodium azide as preservative State: Liquid purified Ig fraction
Concentration:	lot specific
Purification:	Immunoaffinity Chromatography
Conjugation:	Unconjugated
Storage:	Store the antibody undiluted at 2-8°C for one month or (in aliquots) at -20°C for longer. Avoid repeated freezing and thawing.
Stability:	Shelf life: one year from despatch.
Gene Name:	receptor interacting serine/threonine kinase 1
Database Link:	Entrez Gene 8737 Human Q13546
Background:	RIP1 belongs to the RIP subfamily of kinases. The RIP protein contains an N-terminal protein kinase domain, a C-terminal death domain, and a unique internal region. RIP interacts with the death receptors Fas and tumor necrosis receptor 1 (TNFR1) to stimulate apoptosis, SAPK/JNK, and NF-kappaB activation.
Synonyms:	RIPK1
Protein Families:	Druggable Genome, Protein Kinase
Protein Pathways:	Apoptosis, Cytosolic DNA-sensing pathway, RIG-I-like receptor signaling pathway, Toll-like receptor signaling pathway



[View online »](#)

Product images:



Human Placenta: Formalin-Fixed, Paraffin-Embedded (FFPE)