

Product datasheet for **AP23523PU-N**

PIAS1 (C-term) Rabbit Polyclonal Antibody

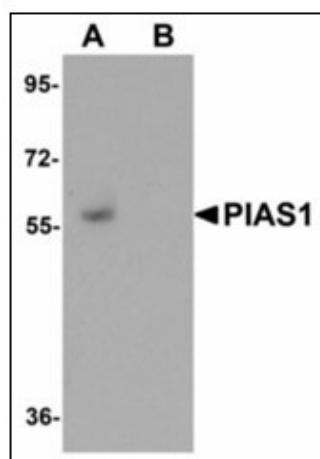
Product data:

Product Type:	Primary Antibodies
Applications:	ELISA, IHC, WB
Recommended Dilution:	ELISA. Immunohistochemistry on Paraffin Sections: 5 µg/ml. Western Blot: 1 - 2 µg/ml.
Reactivity:	Human, Mouse, Rat
Host:	Rabbit
Clonality:	Polyclonal
Immunogen:	PIAS1 antibody was raised against synthetic peptide - KLH conjugated
Specificity:	This antibody reacts to C-term of Protein Inhibitor Of Activated STAT, 1 (PIAS1).
Formulation:	PBS containing 0.02% sodium azide as preservative State: Liquid purified Ig fraction
Concentration:	lot specific
Purification:	Immunoaffinity Chromatography
Conjugation:	Unconjugated
Storage:	Store the antibody undiluted at 2-8°C.
Stability:	Shelf life: one year from despatch.
Gene Name:	protein inhibitor of activated STAT 1
Database Link:	Entrez Gene 56469 Mouse Entrez Gene 300772 Rat Entrez Gene 8554 Human O75925
Synonyms:	PIAS-1, DDXBP1, Gu-binding protein, RNA helicase II-binding protein, DEAD/H box-binding protein 1, Protein inhibitor of activated STAT protein 1
Protein Families:	Druggable Genome, Transcription Factors
Protein Pathways:	Jak-STAT signaling pathway, Pathways in cancer, Small cell lung cancer, Ubiquitin mediated proteolysis

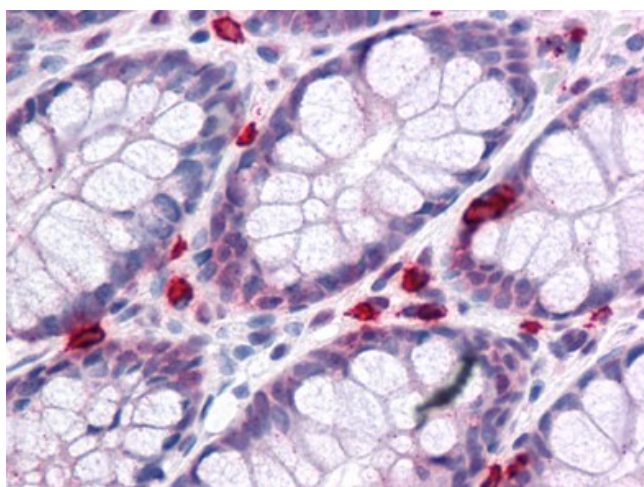


[View online »](#)

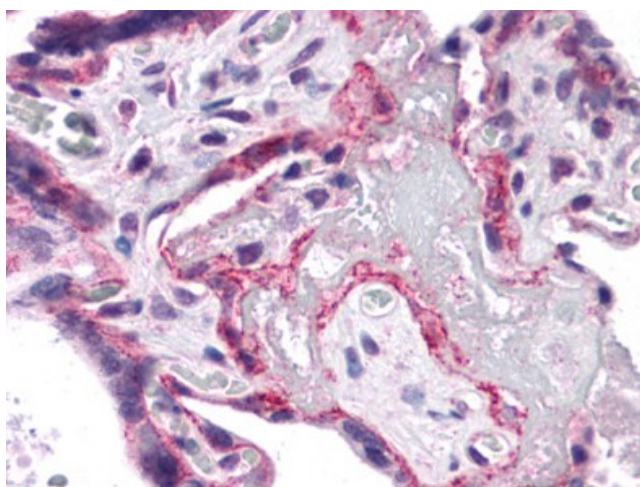
Product images:



Western blot analysis of PIAS1 in human kidney tissue lysate with PIAS1 antibody at 1 ug/ml in (A) the absence and (B) the presence of blocking peptide.



Human Colon: Formalin-Fixed, Paraffin-Embedded (FFPE)



Human Placenta: Formalin-Fixed, Paraffin-Embedded (FFPE)