

Product datasheet for **AP23517PU-N**

Apc4 (ANAPC4) (N-term) Rabbit Polyclonal Antibody

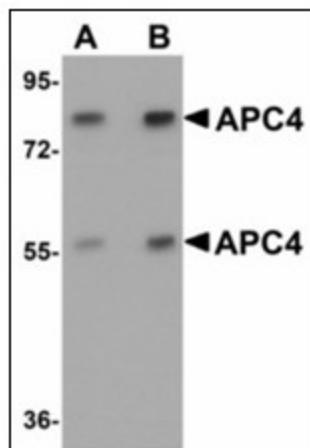
Product data:

Product Type:	Primary Antibodies
Applications:	ELISA, IHC, WB
Recommended Dilution:	ELISA. Immunohistochemistry on Paraffin Sections: 5 µg/ml. Western Blot: 1 - 2 µg/ml.
Reactivity:	Human, Mouse, Rat
Host:	Rabbit
Clonality:	Polyclonal
Immunogen:	ANAPC4 antibody was raised against synthetic peptide - KLH conjugate
Specificity:	This antibody reacts to N-term of Anaphase-promoting Complex Subunit 4 (APC4) (ANAPC4) protein.
Formulation:	PBS containing 0.02% sodium azide as preservative State: Liquid purified Ig fraction
Concentration:	lot specific
Purification:	Immunoaffinity Chromatography
Conjugation:	Unconjugated
Storage:	Store the antibody undiluted at 2-8°C.
Stability:	Shelf life: one year from despatch.
Gene Name:	anaphase promoting complex subunit 4
Database Link:	Entrez Gene 52206 Mouse Entrez Gene 305420 Rat Entrez Gene 29945 Human Q9UJX5
Synonyms:	Anaphase-promoting complex subunit 4
Protein Families:	Druggable Genome
Protein Pathways:	Cell cycle, Oocyte meiosis, Progesterone-mediated oocyte maturation, Ubiquitin mediated proteolysis

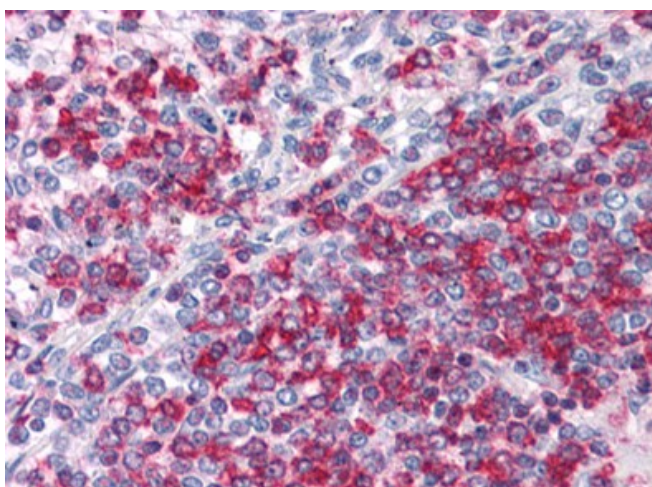


[View online »](#)

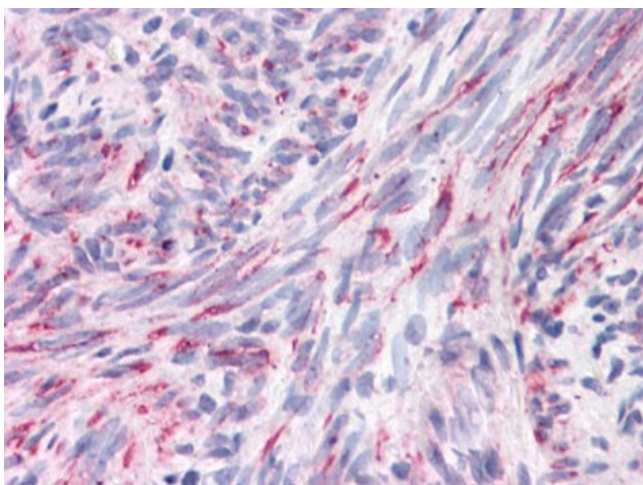
Product images:



Western blot analysis of APC4 in mouse liver tissue lysate with APC4 antibody at (A) 1 and (B) 2 ug/ml.



Human Spleen: Formalin-Fixed, Paraffin-Embedded (FFPE)



Human Uterus: Formalin-Fixed, Paraffin-Embedded (FFPE)