

## Product datasheet for **AP23516PU-N**

### CDC27 (C-term) Rabbit Polyclonal Antibody

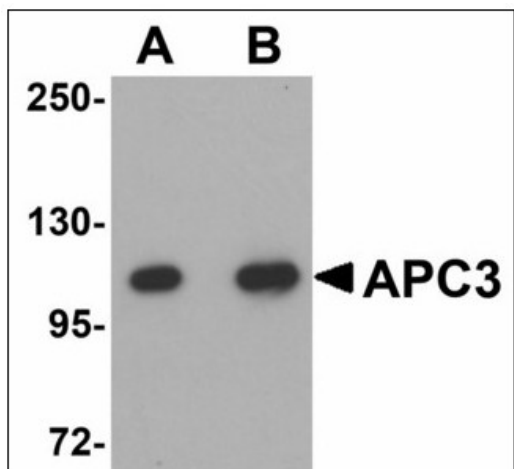
#### Product data:

Product Type:	Primary Antibodies
Applications:	ELISA, IHC, WB
Recommended Dilution:	<b>ELISA.</b> <b>Immunohistochemistry on Paraffin Sections:</b> 5 µg/ml. <b>Western Blot:</b> 1 - 2 µg/ml.
Reactivity:	Human, Mouse, Rat
Host:	Rabbit
Clonality:	Polyclonal
Immunogen:	CDC27 antibody was raised against synthetic peptide - KLH conjugated
Specificity:	This antibody reacts to the C-term of Cell Division Cycle 27 (CDC27) protein.
Formulation:	PBS containing 0.02% sodium azide as preservative State: Liquid purified Ig fraction
Concentration:	lot specific
Purification:	Immunoaffinity Chromatography
Conjugation:	Unconjugated
Storage:	Store the antibody undiluted at 2-8°C.
Stability:	Shelf life: one year from despatch.
Gene Name:	cell division cycle 27
Database Link:	<a href="#">Entrez Gene 217232 Mouse</a> <a href="#">Entrez Gene 360643 Rat</a> <a href="#">Entrez Gene 996 Human P30260</a>
Synonyms:	CDC27hs, H-NUC, D0S1430E, D17S978E
Protein Families:	Druggable Genome
Protein Pathways:	Cell cycle, Oocyte meiosis, Progesterone-mediated oocyte maturation, Ubiquitin mediated proteolysis

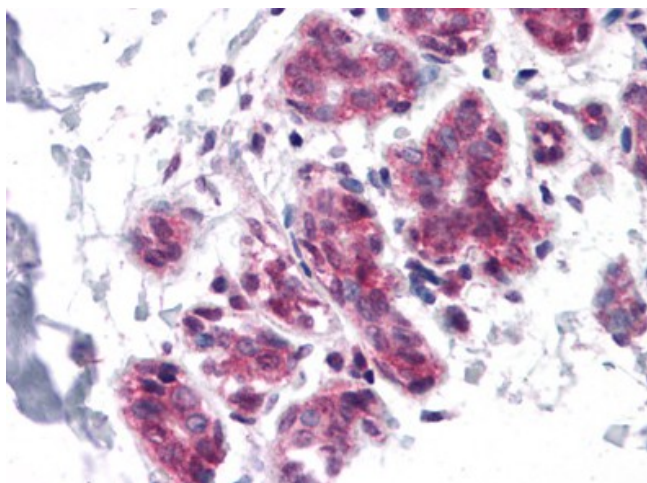


[View online »](#)

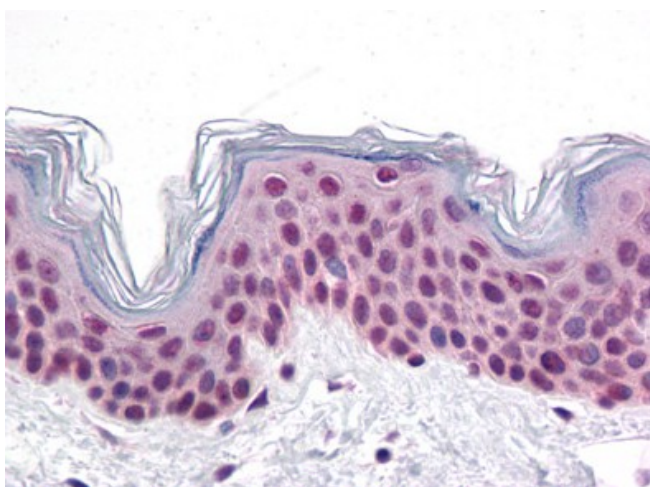
## Product images:



Western blot analysis of APC3 in mouse liver tissue lysate with APC3 antibody at (A) 1 and (B) 2 ug/ml.



Human Breast: Formalin-Fixed, Paraffin-Embedded (FFPE)



Human Skin: Formalin-Fixed, Paraffin-Embedded (FFPE)