

Product datasheet for **AP23515PU-N**

APC2 Rabbit Polyclonal Antibody

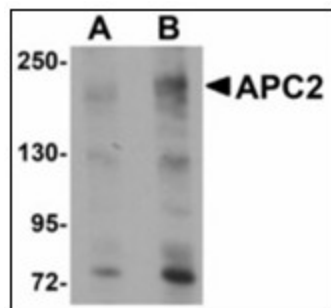
Product data:

Product Type:	Primary Antibodies
Applications:	ELISA, IF, IHC, WB
Recommended Dilution:	ELISA. Immunocytochemistry. Immunohistochemistry on Paraffin Sections: 5 µg/ml. Western Blot: 1 - 2 µg/ml.
Reactivity:	Human, Mouse
Host:	Rabbit
Clonality:	Polyclonal
Immunogen:	APC2 antibody was raised against synthetic peptide - KLH conjugated
Specificity:	This antibody reacts to the internal region of APCL Protein (APC2).
Formulation:	PBS containing 0.02% sodium azide as preservative State: Liquid purified Ig fraction
Concentration:	lot specific
Purification:	Immunoaffinity Chromatography
Conjugation:	Unconjugated
Storage:	Store the antibody undiluted at 2-8°C.
Stability:	Shelf life: one year from despatch.
Gene Name:	adenomatosis polyposis coli 2
Database Link:	Entrez Gene 23805 Mouse Entrez Gene 10297 Human O95996
Synonyms:	APCL, APC-like
Protein Families:	Druggable Genome
Protein Pathways:	Basal cell carcinoma, Colorectal cancer, Endometrial cancer, Pathways in cancer, Regulation of actin cytoskeleton, Wnt signaling pathway

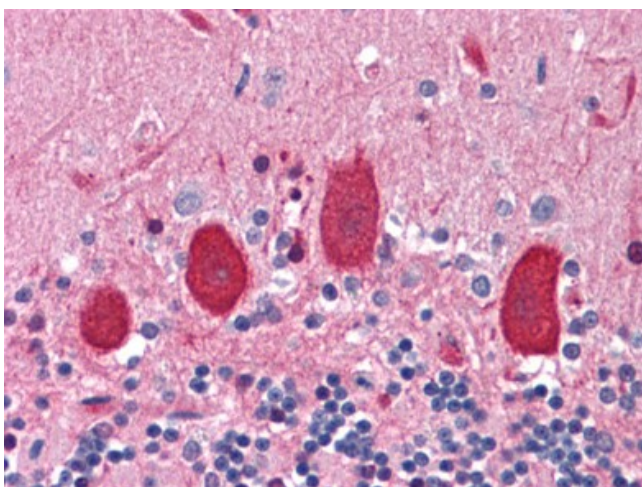


[View online »](#)

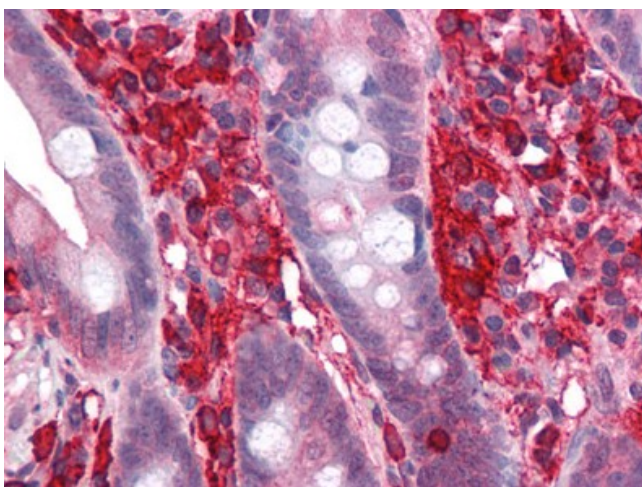
Product images:



Western blot analysis of APC2 in HeLa cell lysate with APC2 antibody at (A) 1 and (B) 2 ug/ml.



Human Brain, Cortex: Formalin-Fixed, Paraffin-Embedded (FFPE)



Human Small Intestine: Formalin-Fixed, Paraffin-Embedded (FFPE)