

Product datasheet for **AP23514PU-N**

LYRM2 (C-term) Rabbit Polyclonal Antibody

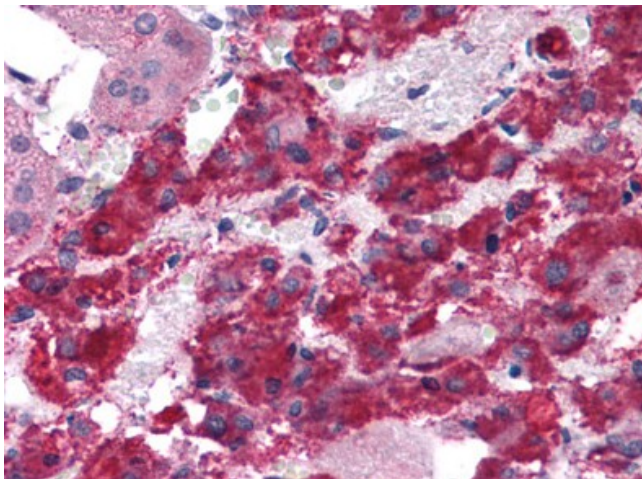
Product data:

Product Type:	Primary Antibodies
Applications:	ELISA, IF, IHC, WB
Recommended Dilution:	ELISA. Immunocytochemistry. Immunohistochemistry on Paraffin Sections: 5 µg/ml. Western Blot: 1 - 2 µg/ml.
Reactivity:	Human, Mouse, Rat
Host:	Rabbit
Clonality:	Polyclonal
Immunogen:	LYRM2 antibody was raised against synthetic peptide - KLH conjugated
Specificity:	This antibody reacts to the C-term of LYR Motif Containing 2 (LYRM2) protein.
Formulation:	PBS containing 0.02% sodium azide as preservative State: Liquid purified Ig fraction
Concentration:	lot specific
Purification:	Immunoaffinity Chromatography
Conjugation:	Unconjugated
Storage:	Store the antibody undiluted at 2-8°C.
Stability:	Shelf life: one year from despatch.
Gene Name:	LYR motif containing 2
Database Link:	Entrez Gene 108755 Mouse Entrez Gene 690354 Rat Entrez Gene 57226 Human Q9NU23
Synonyms:	DJ12208.2; FLJ18193; FLJ18317; FLJ21130; MGC104253

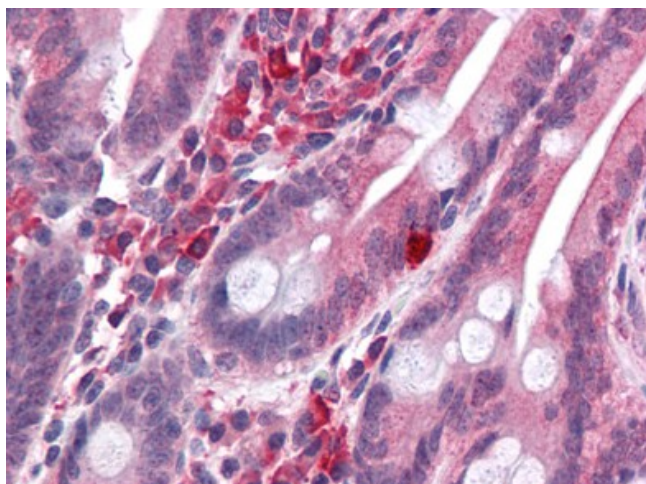


[View online »](#)

Product images:



Human Adrenal: Formalin-Fixed, Paraffin-Embedded (FFPE)



Human Small Intestine: Formalin-Fixed, Paraffin-Embedded (FFPE)