

Product datasheet for **AP23513PU-N**

EFHD2 (N-term) Rabbit Polyclonal Antibody

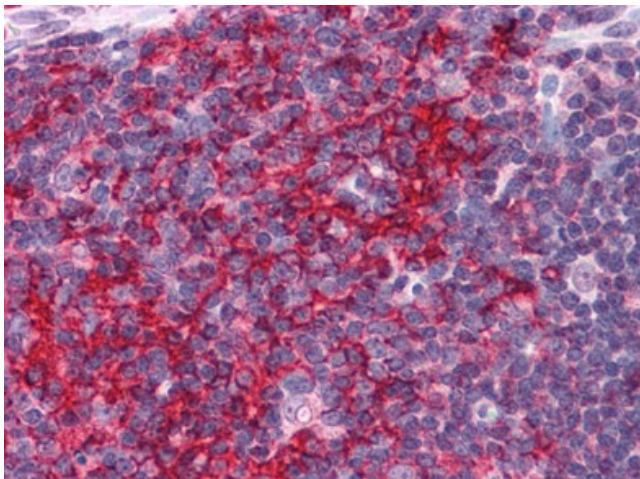
Product data:

Product Type:	Primary Antibodies
Applications:	ELISA, IHC, WB
Recommended Dilution:	ELISA. Immunohistochemistry on Paraffin Sections: 5 µg/ml. Western Blot: 1 - 2 µg/ml.
Reactivity:	Human, Mouse, Rat
Host:	Rabbit
Clonality:	Polyclonal
Immunogen:	EFHD2 antibody was raised against synthetic peptide - KLH conjugated
Specificity:	This antibody reacts to the N-term of EF-hand Domain Family, Member D2 (EFHD2) protein.
Formulation:	PBS containing 0.02% sodium azide as preservative State: Liquid purified Ig fraction
Concentration:	lot specific
Purification:	Immunoaffinity Chromatography
Conjugation:	Unconjugated
Storage:	Store the antibody undiluted at 2-8°C.
Stability:	Shelf life: one year from despatch.
Gene Name:	EF-hand domain family member D2
Database Link:	Entrez Gene 27984 Mouse Entrez Gene 298609 Rat Entrez Gene 79180 Human Q96C19
Synonyms:	Swiprosin-1, SWS1, Swiprosin 1

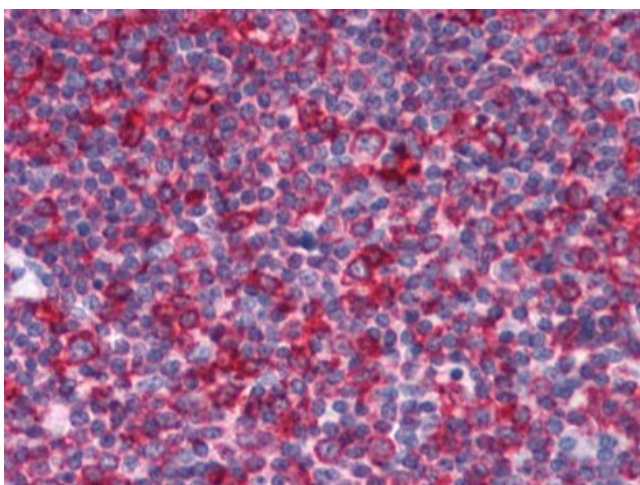


[View online »](#)

Product images:



Human Thymus: Formalin-Fixed, Paraffin-Embedded (FFPE)



Human Tonsil: Formalin-Fixed, Paraffin-Embedded (FFPE)