

## Product datasheet for **AP23512PU-N**

### EFHD1 (N-term) Rabbit Polyclonal Antibody

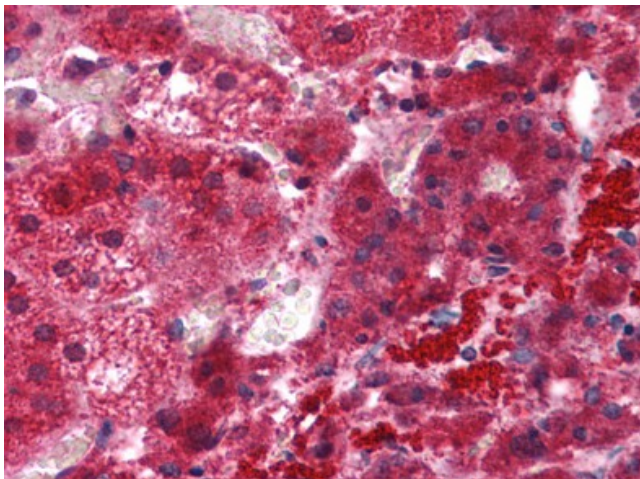
#### Product data:

Product Type:	Primary Antibodies
Applications:	ELISA, IF, IHC, WB
Recommended Dilution:	<b>ELISA.</b> <b>Immunofluorescence.</b> <b>Immunohistochemistry on Paraffin Sections:</b> 5 µg/ml. <b>Western Blot:</b> 2 - 4 µg/ml.
Reactivity:	Human, Mouse, Rat
Host:	Rabbit
Clonality:	Polyclonal
Immunogen:	EFHD1 antibody was raised against synthetic peptide - KLH conjugated
Specificity:	This antibody reacts to the N-term of EF-Hand Domain Family, Member D1 (EFHD1) protein.
Formulation:	PBS containing 0.02% sodium azide as preservative State: Liquid purified Ig fraction
Concentration:	lot specific
Purification:	Immunoaffinity Chromatography
Conjugation:	Unconjugated
Storage:	Store the antibody undiluted at 2-8°C.
Stability:	Shelf life: one year from despatch.
Gene Name:	EF-hand domain family member D1
Database Link:	<a href="#">Entrez Gene 98363 Mouse</a> <a href="#">Entrez Gene 501181 Rat</a> <a href="#">Entrez Gene 80303 Human</a> <a href="#">Q9BUP0</a>
Synonyms:	Swiprosin-2, Swiprosin 2, SWS2, PP3051

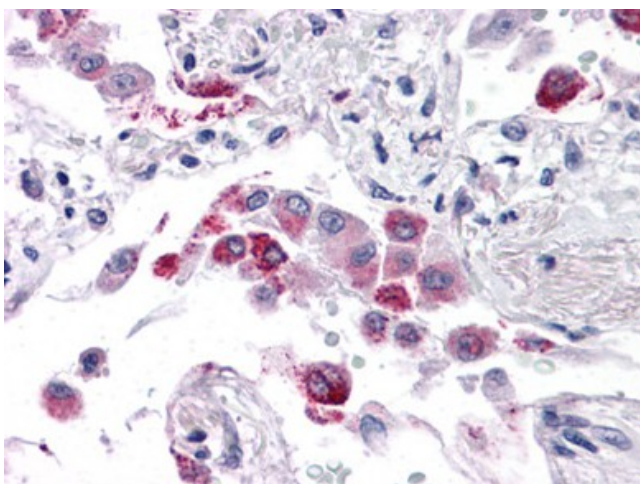


[View online »](#)

**Product images:**



Human Adrenal: Formalin-Fixed, Paraffin-Embedded (FFPE)



Human Lung: Formalin-Fixed, Paraffin-Embedded (FFPE)