

Product datasheet for **AP23511PU-N**

ELOVL7 (N-term) Rabbit Polyclonal Antibody

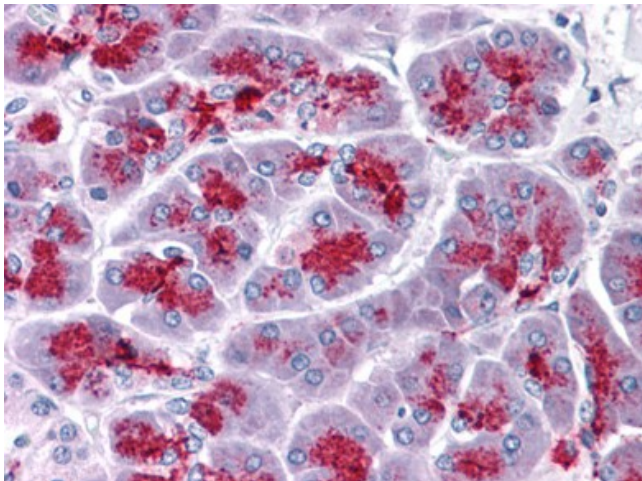
Product data:

Product Type:	Primary Antibodies
Applications:	ELISA, IHC, WB
Recommended Dilution:	ELISA. Immunohistochemistry on Paraffin Sections: 5 µg/ml. Western Blot: 1 - 2 µg/ml.
Reactivity:	Human, Mouse
Host:	Rabbit
Clonality:	Polyclonal
Immunogen:	ELOVL7 antibody was raised against synthetic peptide - KLH conjugated
Specificity:	This antibody reacts to the N-term of Elongation of Very Long Chain Fatty Acids Protein 7 (ELOVL7) protein.
Formulation:	PBS containing 0.02% sodium azide as preservative State: Liquid purified Ig fraction
Concentration:	lot specific
Purification:	Immunoaffinity Chromatography
Conjugation:	Unconjugated
Storage:	Store the antibody undiluted at 2-8°C.
Stability:	Shelf life: one year from despatch.
Gene Name:	ELOVL fatty acid elongase 7
Database Link:	Entrez Gene 74559 Mouse Entrez Gene 79993 Human A1L3X0
Synonyms:	FLJ23563
Protein Families:	Transmembrane



[View online »](#)

Product images:



Human Pancreas: Formalin-Fixed, Paraffin-Embedded (FFPE)